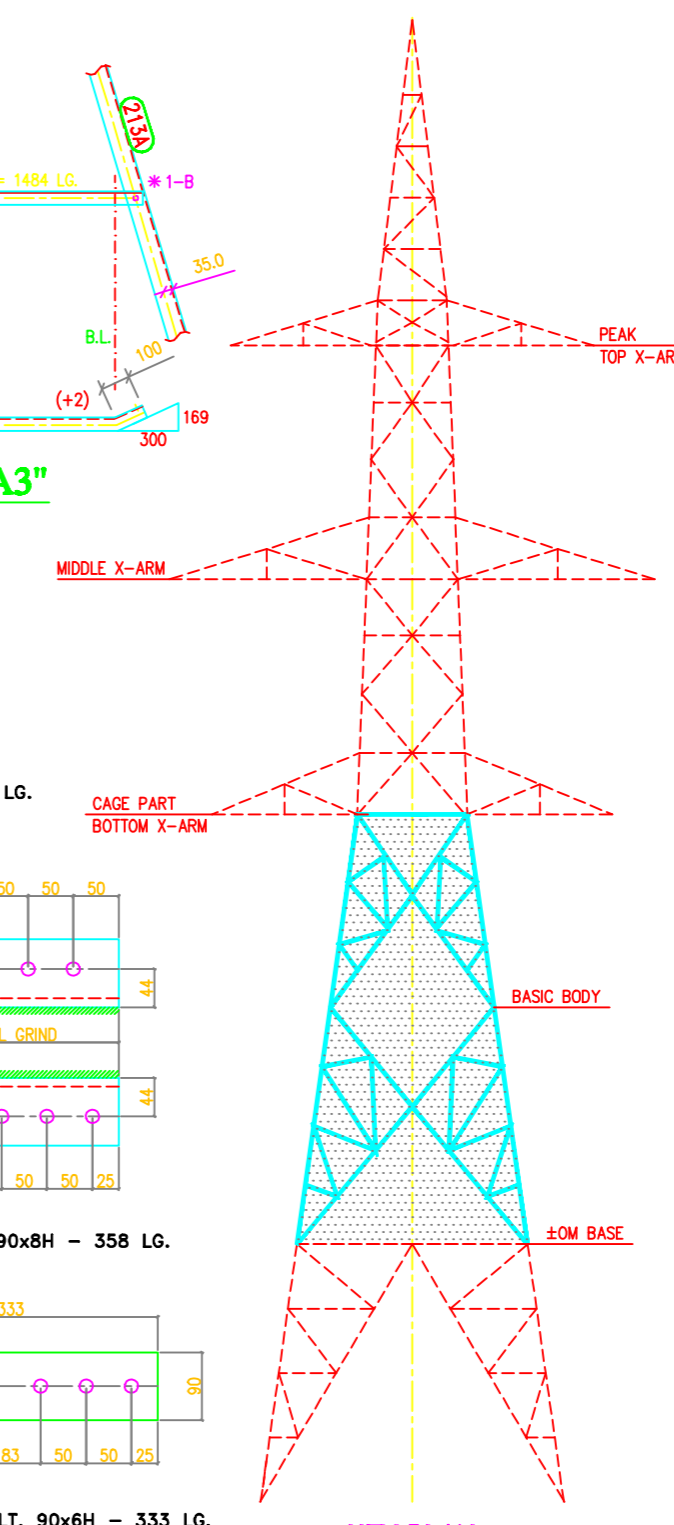
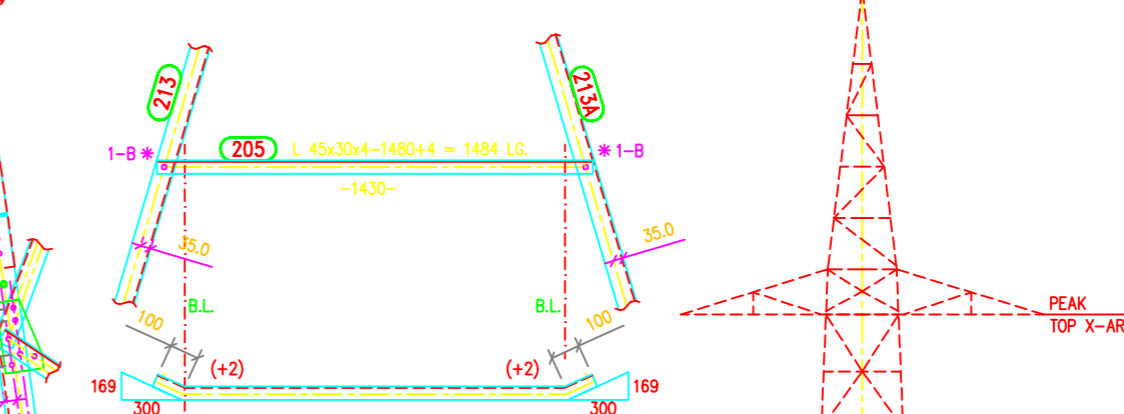
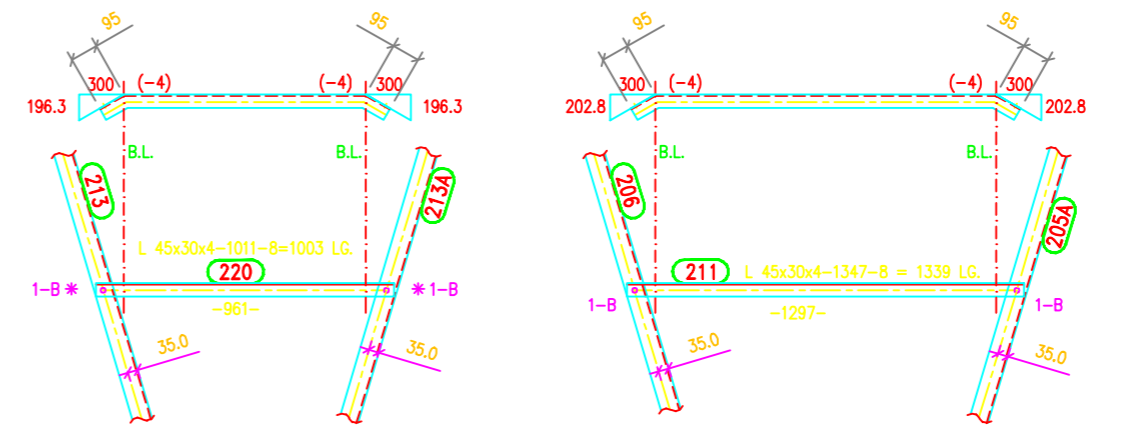
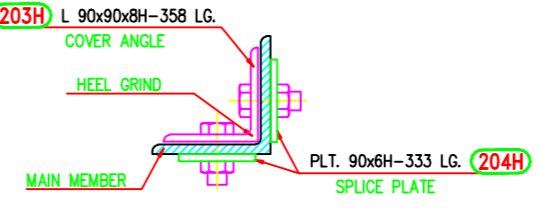
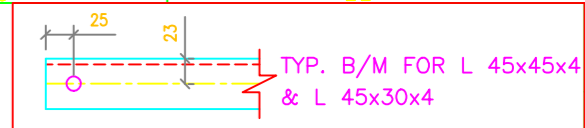
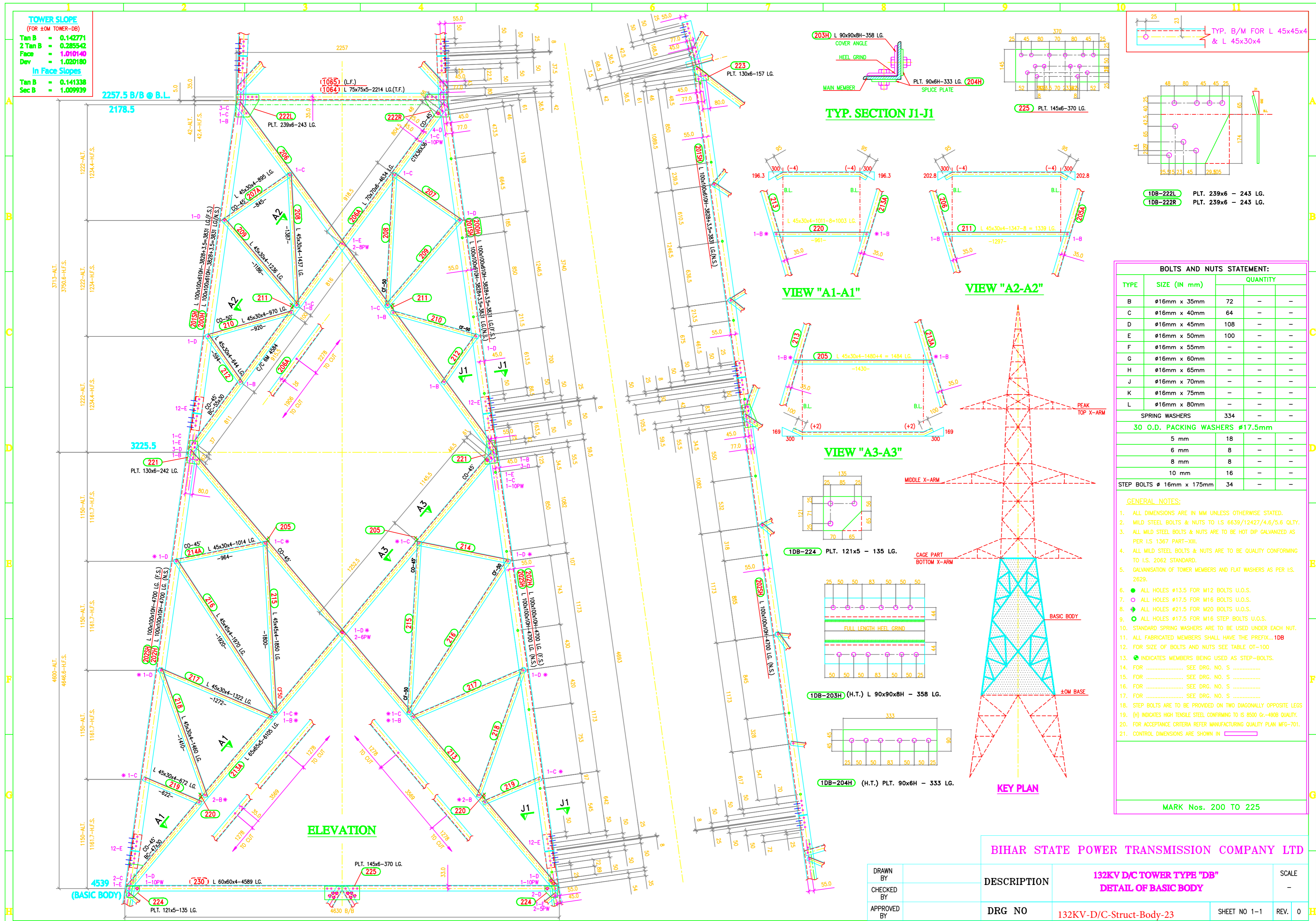


TOWER SLOPE
(FOR ±0M TOWER-DB)

Tan B = 0.142771
2 Tan B = 0.285542
Face = 1.010140
Dev = 1.020180

In Face Slopes

Tan B = 0.141338
Sec B = 1.009939



BOLTS AND NUTS STATEMENT:

TYPE	SIZE (IN mm)	QUANTITY		
B	Ø16mm x 35mm	72	-	-
C	Ø16mm x 40mm	64	-	-
D	Ø16mm x 45mm	108	-	-
E	Ø16mm x 50mm	100	-	-
F	Ø16mm x 55mm	-	-	-
G	Ø16mm x 60mm	-	-	-
H	Ø16mm x 65mm	-	-	-
J	Ø16mm x 70mm	-	-	-
K	Ø16mm x 75mm	-	-	-
L	Ø16mm x 80mm	-	-	-
SPRING WASHERS		334	-	-
30 O.D. PACKING WASHERS Ø17.5mm				
	5 mm	18	-	-
	6 mm	8	-	-
	8 mm	8	-	-
	10 mm	16	-	-
STEP BOLTS Ø 16mm x 175mm		34	-	-

- GENERAL NOTES:**
- ALL DIMENSIONS ARE IN MM UNLESS OTHERWISE STATED.
 - MILD STEEL BOLTS & NUTS TO IS 6639/12427/4.6/5.6 QTY.
 - ALL MILD STEEL BOLTS & NUTS ARE TO BE HOT DIP GALVANIZED AS PER IS 1367 PART-XIII.
 - ALL MILD STEEL BOLTS & NUTS ARE TO BE QUALITY CONFORMING TO I.S. 2062 STANDARD.
 - GALVANISATION OF TOWER MEMBERS AND FLAT WASHERS AS PER IS. 2629.
 - ALL HOLES Ø13.5 FOR M12 BOLTS U.O.S.
 - ALL HOLES Ø17.5 FOR M16 BOLTS U.O.S.
 - ALL HOLES Ø21.5 FOR M20 BOLTS U.O.S.
 - ALL HOLES Ø17.5 FOR M16 STEP BOLTS U.O.S.
 - STANDARD SPRING WASHERS ARE TO BE USED UNDER EACH NUT.
 - ALL FABRICATED MEMBERS SHALL HAVE THE PREFIX...1DB
 - FOR SIZE OF BOLTS AND NUTS SEE TABLE OT-100
 - INDICATES MEMBERS BEING USED AS STEP-BOLTS.
 - FOR SEE DRG. NO. S
 - FOR SEE DRG. NO. S
 - FOR SEE DRG. NO. S
 - FOR SEE DRG. NO. S
 - STEP BOLTS ARE TO BE PROVIDED ON TWO DIAGONALLY OPPOSITE LEGS
 - (H) INDICATES HIGH TENSILE STEEL CONFORMING TO IS 8500 Gr.-490B QUALITY.
 - FOR ACCEPTANCE CRITERIA REFER MANUFACTURING QUALITY PLAN MFG-701.
 - CONTROL DIMENSIONS ARE SHOWN IN []

MARK Nos. 200 TO 225

BIHAR STATE POWER TRANSMISSION COMPANY LTD

DRAWN BY	DESCRIPTION	132KV D/C TOWER TYPE "DB"	SCALE
CHECKED BY	DRG NO	132KV-D/C-Struct-Body-23	-
APPROVED BY	SHEET NO 1-1		REV. 0