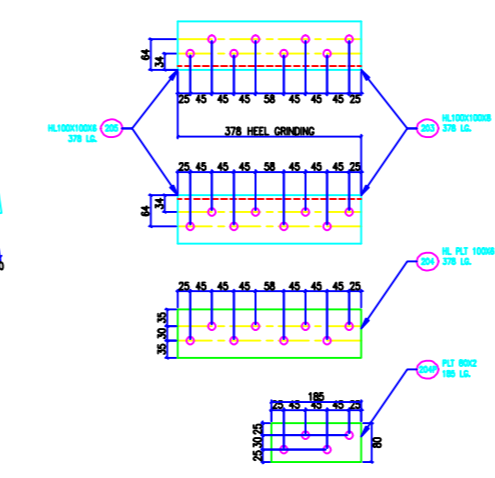
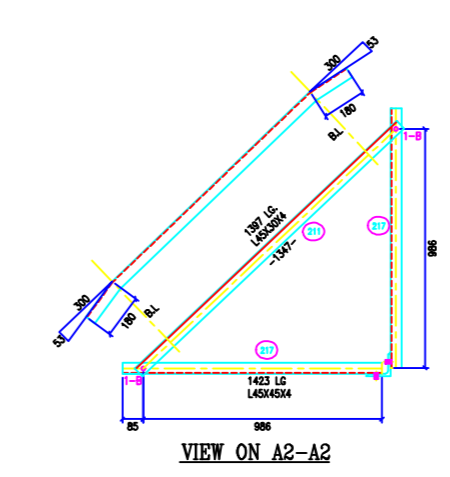
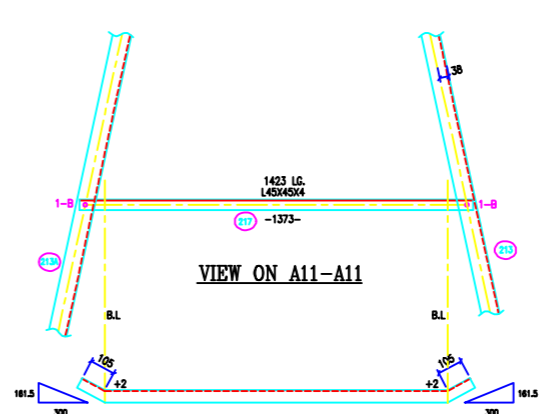
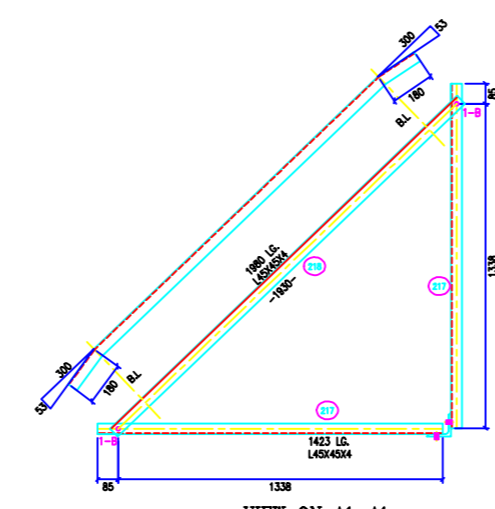
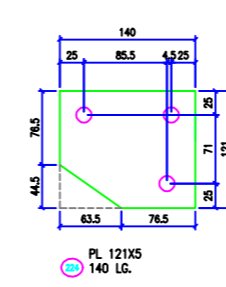
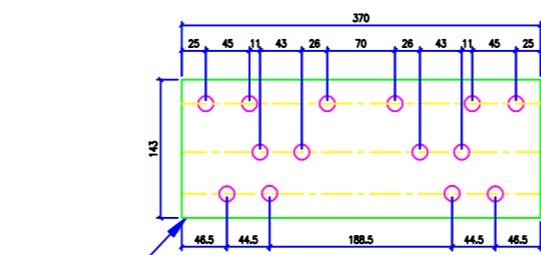
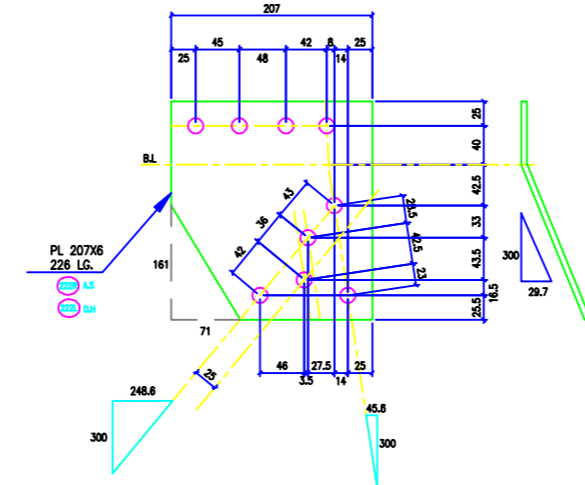
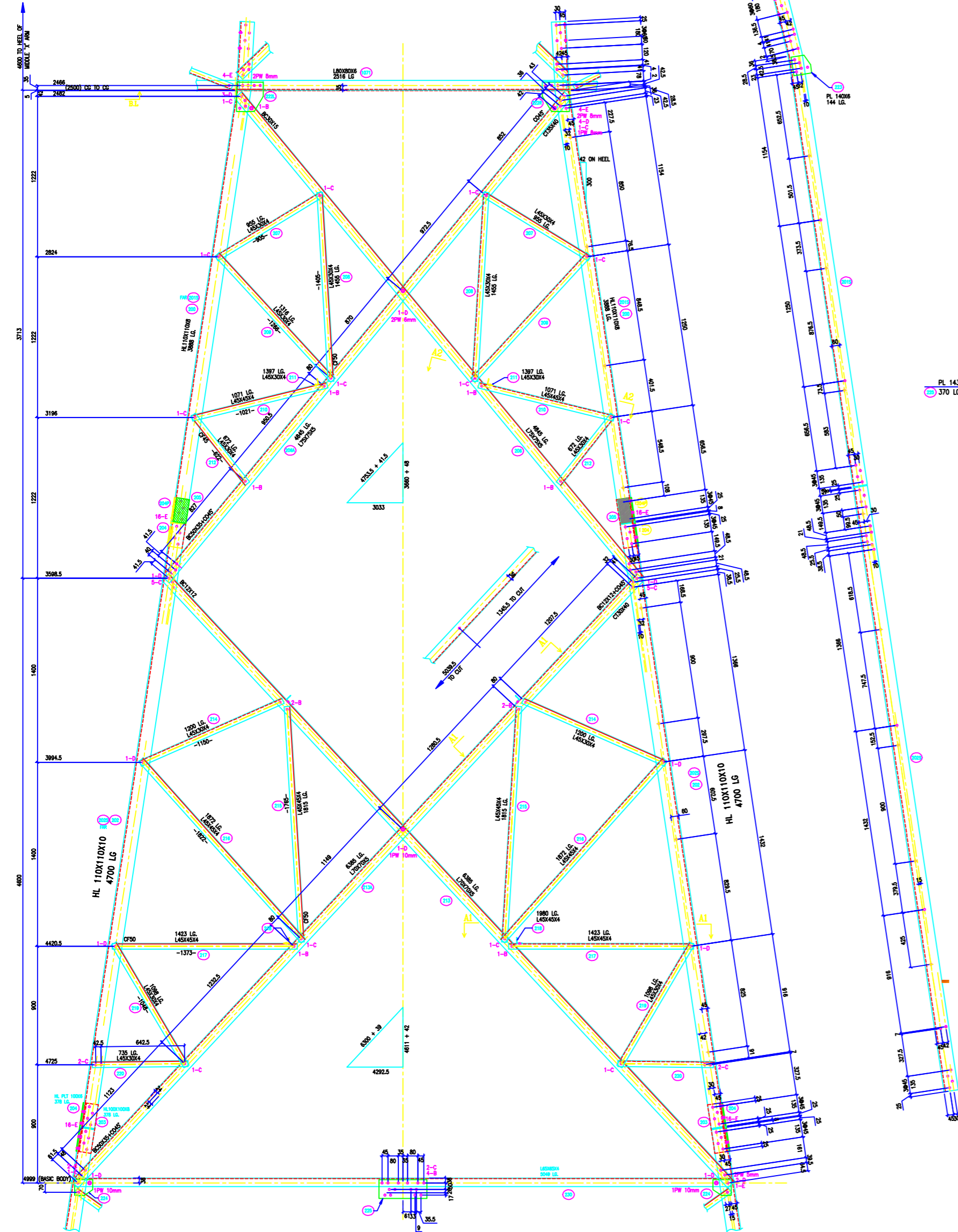
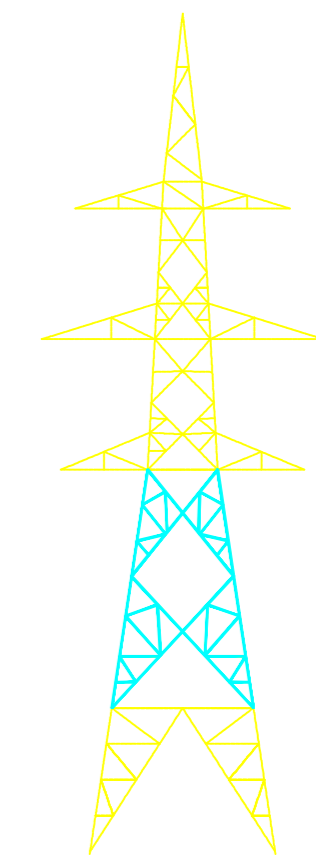
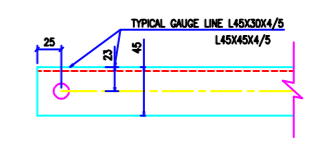


VERTICAL SLOPE
 TAMB = 0.152239
 ZTAMB = 0.304478
 FACE = 1.011922
 DEVELOP = 1.022914
 HL FACE SLOPE
 TAMB = 0.152805
 ZTAMB = 1.011263



BOLTS AND NUTS STATEMENT

BOLT SIZE	QNTY	FOR +3M/ +5M/ +9M			
		HEX	ATB	HEX	ATB
# 16X35	80	48	32	80	0
# 16X40	136	104	32	136	0
# 16X45	76	56	20	76	0
# 16X50	152	152	0	152	0
SPRING WASHERS	444	360	84	444	0
STEP BOLTS	34	34		34	
5 mm PACK WASHER	8	8		8	
6 mm PACK WASHER	8	8		8	
8 mm PACK WASHER	12	12		12	
10 mm PACK WASHER	12	12		12	



BOLTS AND NUTS STATEMENT

TYPE	SIZE (IN MM)	QUANTITY	
B	# 16X35	80	
C	# 16X40	136	
D	# 16X45	76	
E	# 16X50	152	
F	# 16X55	-	
G	# 16X60	-	
H	# 16X65	-	
J	# 16X70	-	
K	# 16X75	-	
L	# 16X80	-	
SPRING WASHERS		444	
30 O.D. PACKING WASHERS # 17.5 MM			
	5 mm	8	
	6 mm	8	
	8 mm	12	
	10 mm	12	
STEP BOLTS #16 mm X 175mm		34	

- GENERAL NOTES:**
1. ALL DIMENSIONS ARE IN MM UNLESS OTHERWISE SPECIFIED.
 2. MILD STEEL BOLT AND NUTS TO IS 6838/12427/5.6 QTY
 3. ALL MILD STEEL BOLT AND NUTS ARE TO BE HOT DIP GALVANISED AS PER IS 1887 PART-3/8
 4. ALL MILD STEEL SECTIONS SHALL BE OF TESTED QUALITY CONFORMING TO IS 2062 STANDARD
 5. GALVANIZATION OF TOWER MEMBERS AND FLAT WASHERS AS PER IS 2029
 6. # ALL HOLES # 13.5mm FOR #12mm BOLTS
 7. # ALL HOLES # 17.5mm FOR #16mm BOLTS
 8. # ALL HOLES # 21.5mm FOR #20mm BOLTS
 9. # ALL HOLES # 17.5mm FOR #16mm STEP BOLTS
 10. STANDARD SPRING WASHERS ARE TO BE USED UNDER EACH NUT
 11. ALL FABRICATED MEMBERS SHALL HAVE PERFLY
 12. # INDICATES MEMBERS BEING USED AS STEP BOLTS.
 13. STEP BOLTS ARE TO BE PROVIDED ON TWO DIAGONALLY OPP. LEGS

MARK NO: 200 + 225

BIHAR STATE POWER TRANSMISSION COMPANY LTD

DRAWN BY		DESCRIPTION	132KV D/C TOWER TYPE "DC" DETAIL OF BASIC BODY	SCALE	-
CHECKED BY		DRG NO	132KV-D/C-Struct-Body-32	SHEET NO 1-1	REV. 0
APPROVED BY					