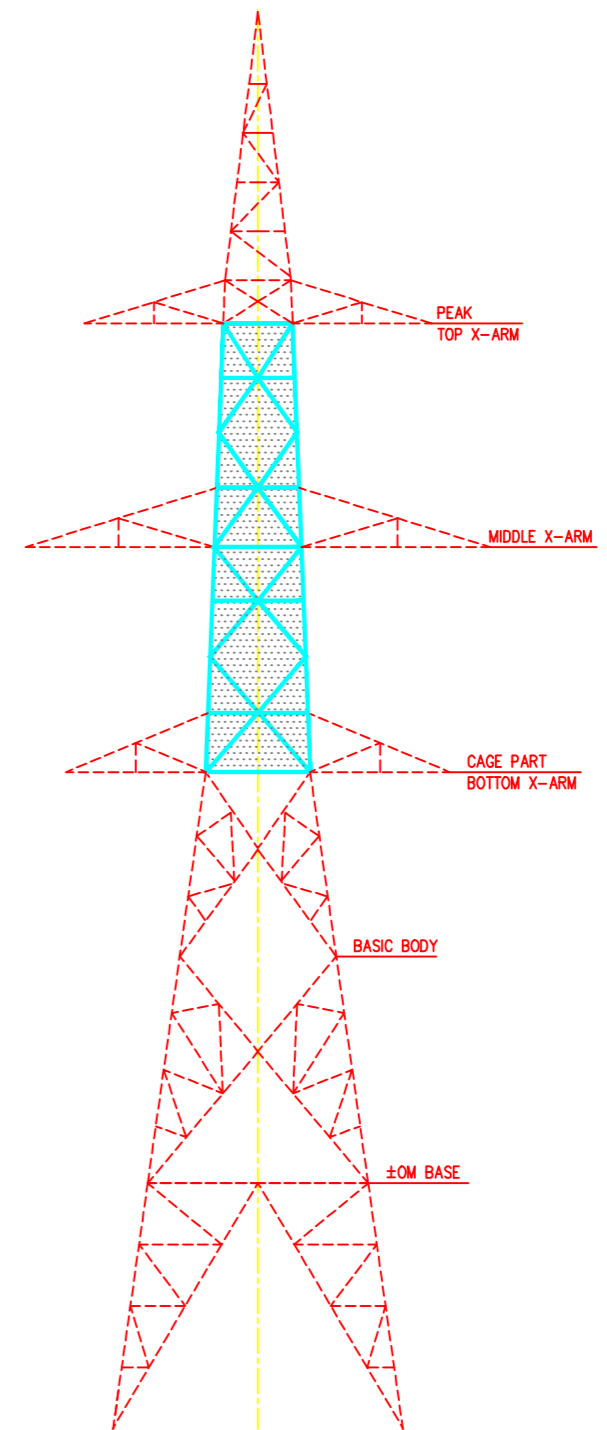
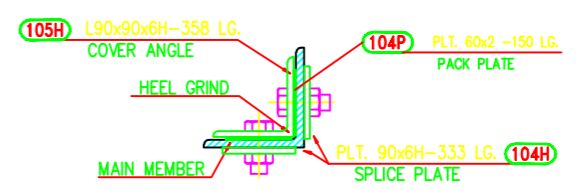
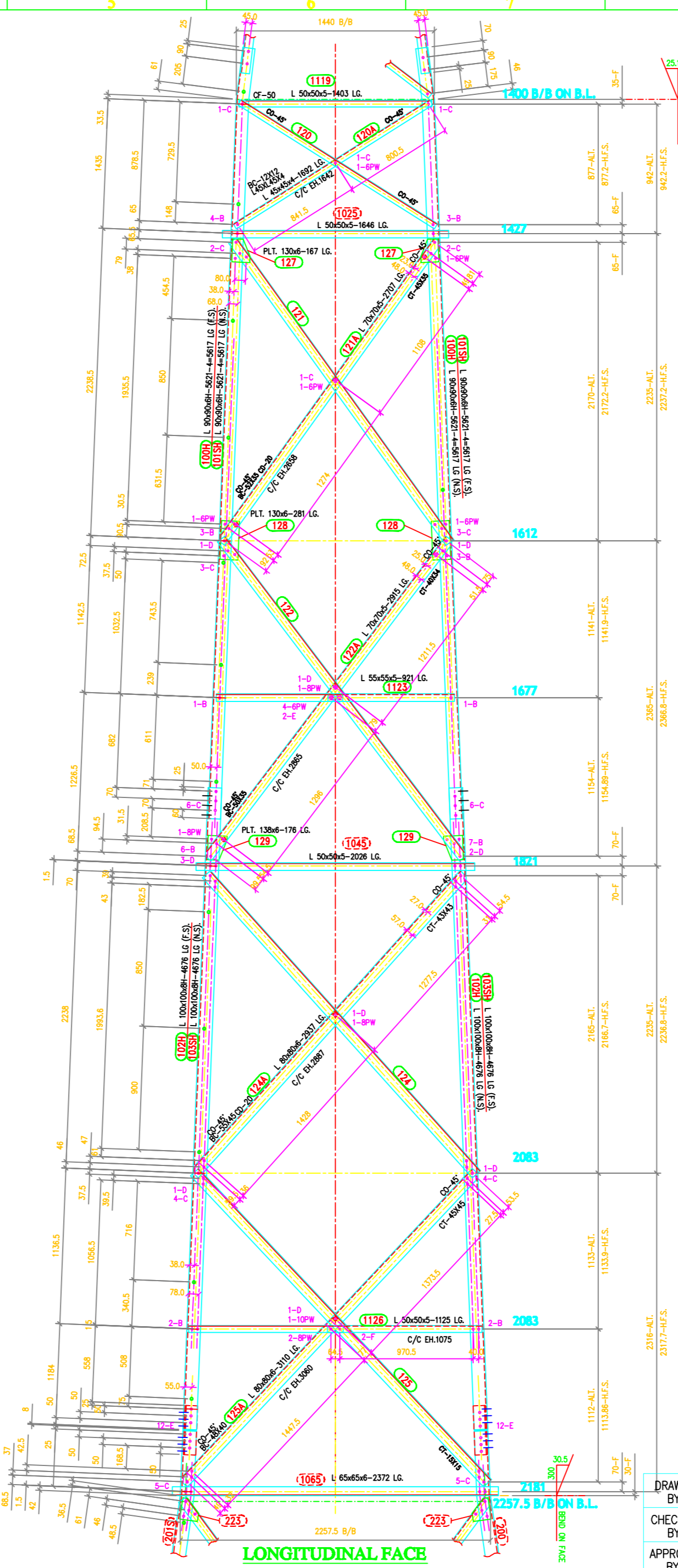
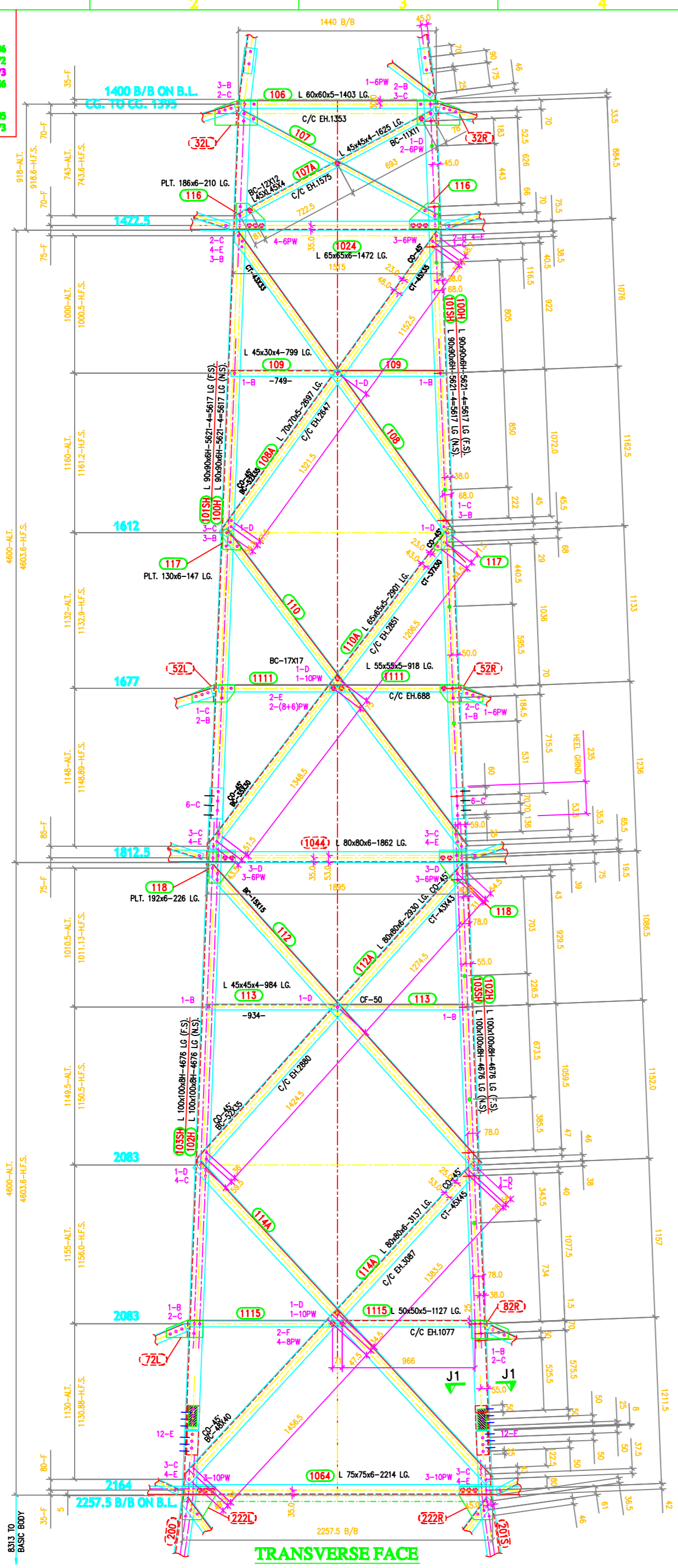
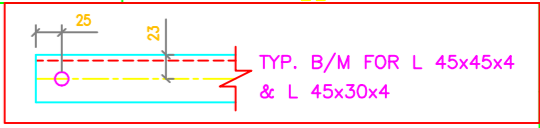


TOWER SLOPE
(FOR CAGE PART-08)

Tan B = 0.039336
2.Tan B = 0.078672
Tana = 1.000773
Tana = 1.001546

In Face Slopes
Tan B = 0.039305
Sec B = 1.000773



BOLTS AND NUTS STATEMENT:			
TYPE	SIZE (IN mm)	QUANTITY	
B	#16mm x 35mm	125	-
C	#16mm x 40mm	164	-
D	#16mm x 45mm	52	-
E	#16mm x 50mm	82	-
F	#16mm x 55mm	8	-
G	#16mm x 60mm	-	-
H	#16mm x 65mm	-	-
J	#16mm x 70mm	-	-
K	#16mm x 75mm	-	-
L	#16mm x 80mm	-	-
SPRING WASHERS		431	-
30 O.D. PACKING WASHERS #17.5mm			
	5 mm	-	-
	6 mm	44	-
	8 mm	32	-
	10 mm	18	-
STEP BOLTS # 16mm x 175mm		42	-

- GENERAL NOTES:**
- ALL DIMENSIONS ARE IN MM UNLESS OTHERWISE STATED.
 - MILD STEEL BOLTS & NUTS TO I.S. 6639/12427/4.6/5.6 QTY.
 - ALL MILD STEEL BOLTS & NUTS ARE TO BE HOT DIP GALVANIZED AS PER I.S. 1367 PART-XIII.
 - ALL MILD STEEL BOLTS & NUTS ARE TO BE QUALITY CONFORMING TO I.S. 2062 STANDARD.
 - GALVANISATION OF TOWER MEMBERS AND FLAT WASHERS AS PER I.S. 2629.
 - ALL HOLES #13.5 FOR M12 BOLTS U.O.S.
 - ALL HOLES #17.5 FOR M16 BOLTS U.O.S.
 - ALL HOLES #21.5 FOR M20 BOLTS U.O.S.
 - ALL HOLES #17.5 FOR M16 STEP BOLTS U.O.S.
 - STANDARD SPRING WASHERS ARE TO BE USED UNDER EACH NUT.
 - ALL FABRICATED MEMBERS SHALL HAVE THE PREFIX. 108
 - FOR SIZE OF BOLTS AND NUTS SEE TABLE OT-100
 - INDICATES MEMBERS BEING USED AS STEP-BOLTS.
 - FOR SEE DRG. NO. S
 - FOR SEE DRG. NO. S
 - FOR SEE DRG. NO. S
 - FOR SEE DRG. NO. S
 - FOR SEE DRG. NO. S
 - STEP BOLTS ARE TO BE PROVIDED ON TWO DIAGONALLY OPPOSITE LEGS
 - (H) INDICATES HIGH TENSILE STEEL CONFORMING TO IS 8500 Gr.-498 QUALITY.
 - FOR ACCEPTANCE CRITERIA REFER MANUFACTURING QUALITY PLAN MFC-701.
 - CONTROL DIMENSIONS ARE SHOWN IN

MARK Nos. 100 - 129

BIHAR STATE POWER TRANSMISSION COMPANY LTD

DRAWN BY	DESCRIPTION	132KV D/C TOWER TYPE "DB"	SCALE		
CHECKED BY				132KV D/C-Struct-Cage-24	SHEET NO 1-1
APPROVED BY					
DRG NO	132KV-D/C-Struct-Cage-24	SHEET NO 1-1	REV. 0		