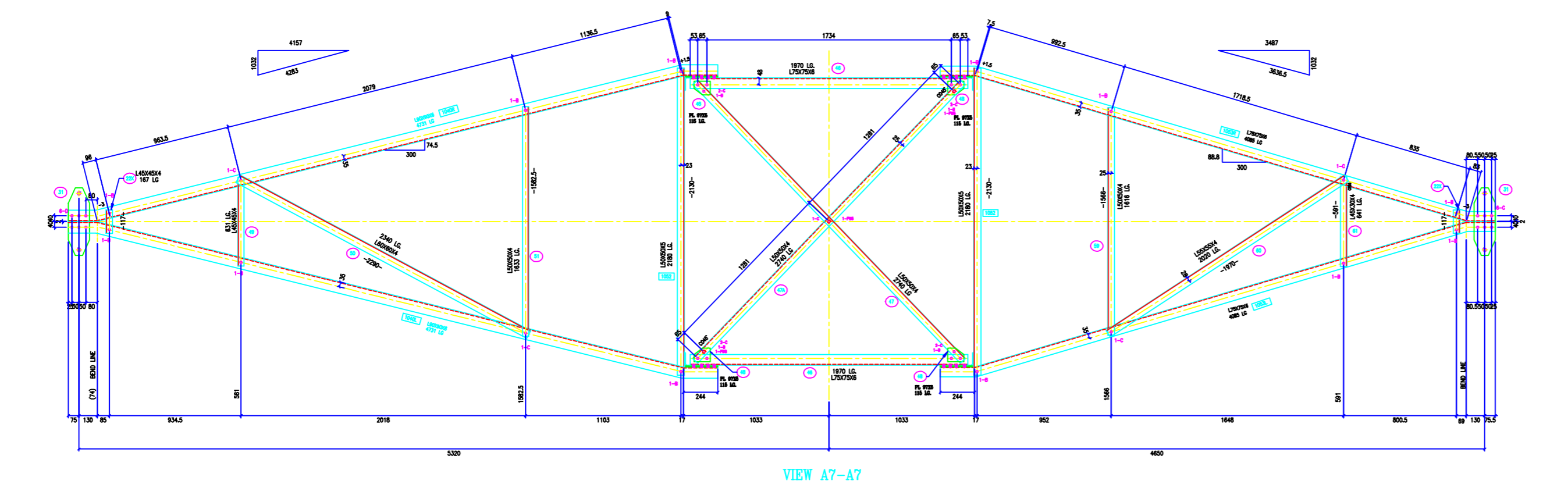
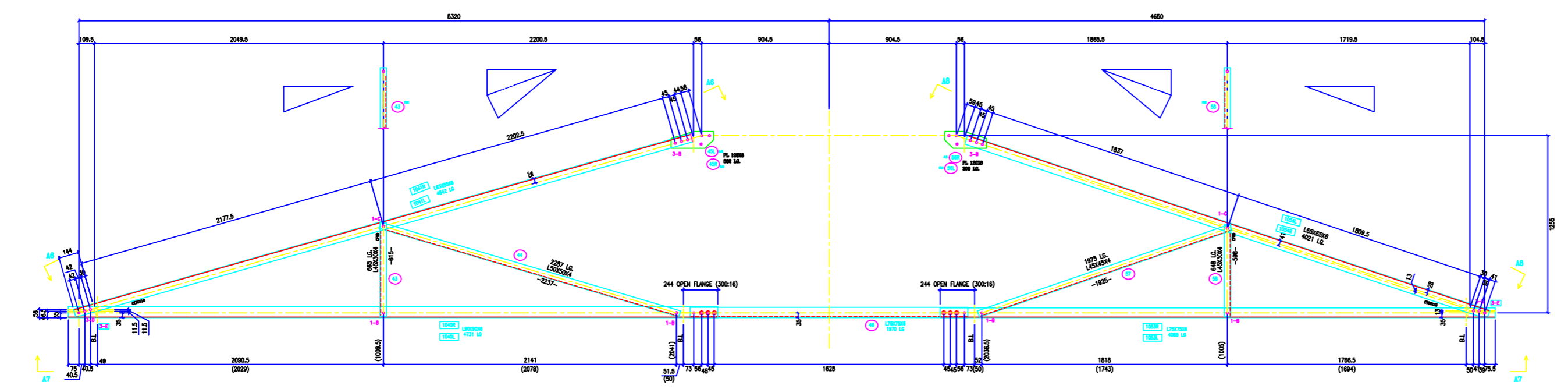
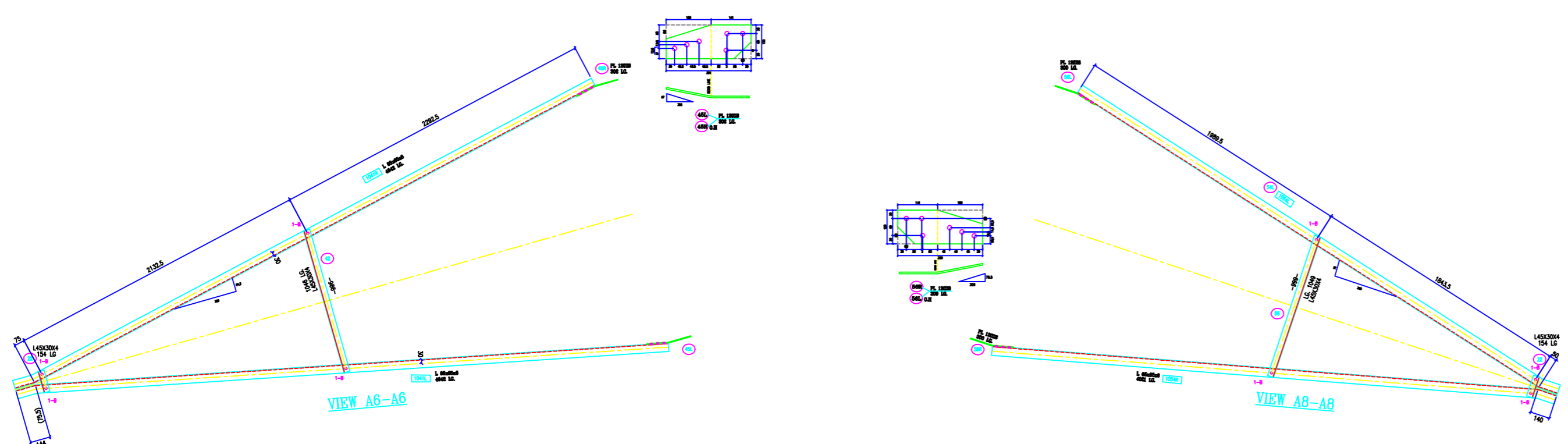
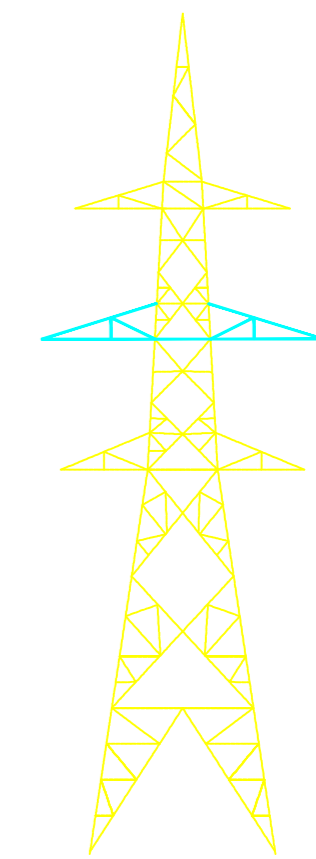
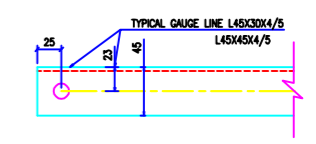


VERTICAL SLOPE
 TAMB =
 ZTAMB =
 FACE =
 DEVELOP =
 IN FACE SLOPE
 TAMB =
 ZTAMB =



BOLTS AND NUTS STATEMENT

TYPE	SIZE (IN MM)	QUANTITY	
		DC	DCR
B	# 16X35	50	50
C	# 16X40	17	17
D	# 16X45	12	6
E	# 16X50	-	6
F	# 16X55	-	-
G	# 16X60	-	-
H	# 16X65	-	-
J	# 16X70	-	-
K	# 16X75	-	-
L	# 16X80	-	-
SPRING WASHERS		79	79
30 O.D. PACKING WASHERS # 17.5 MM		-	-
	5 mm	-	-
	6 mm	-	-
	8 mm	-	-
	10 mm	-	-
STEP BOLTS #16 mm X 175mm		-	-

- GENERAL NOTES:**
1. ALL DIMENSIONS ARE IN MM UNLESS OTHERWISE SPECIFIED.
 2. MILD STEEL BOLT AND NUTS TO IS 6838/12427/5.6 QLYT
 3. ALL MILD STEEL BOLT AND NUTS ARE TO BE HOT DIP GALVANISED AS PER IS 1587 PART-3/8
 4. ALL MILD STEEL SECTIONS SHALL BE OF TESTED QUALITY CONFORMING TO IS 2062 STANDARD
 5. GALVANIZATION OF TOWER MEMBERS AND FLAT WASHERS AS PER IS 2629
 6. # ALL HOLES # 13.5mm FOR #12mm BOLTS
 7. # ALL HOLES # 17.5mm FOR #16mm BOLTS
 8. # ALL HOLES # 21.5mm FOR #20mm BOLTS
 9. # ALL HOLES # 27.5mm FOR #25mm STEP BOLTS
 10. STANDARD SPRING WASHERS ARE TO BE USED UNDER EACH NUT
 11. ALL FABRICATED MEMBERS SHALL HAVE PTHFY
 12. # INDICATES MEMBERS BEING USED AS STEP BOLTS
 13. STEP BOLTS ARE TO BE PROVIDED ON TWO DIAGONALLY OPP. LEGS

MARK NO: 40 TO 61

BIHAR STATE POWER TRANSMISSION COMPANY LTD

DRAWN BY		DESCRIPTION	132KV D/C TOWER TYPE "DC" DETAIL OF MIDDLE 'X' ARM	SCALE	-
CHECKED BY					
APPROVED BY		DRG NO	132KV-D/C-Struct-Middle-X-35	SHEET NO 1-1	REV. 0