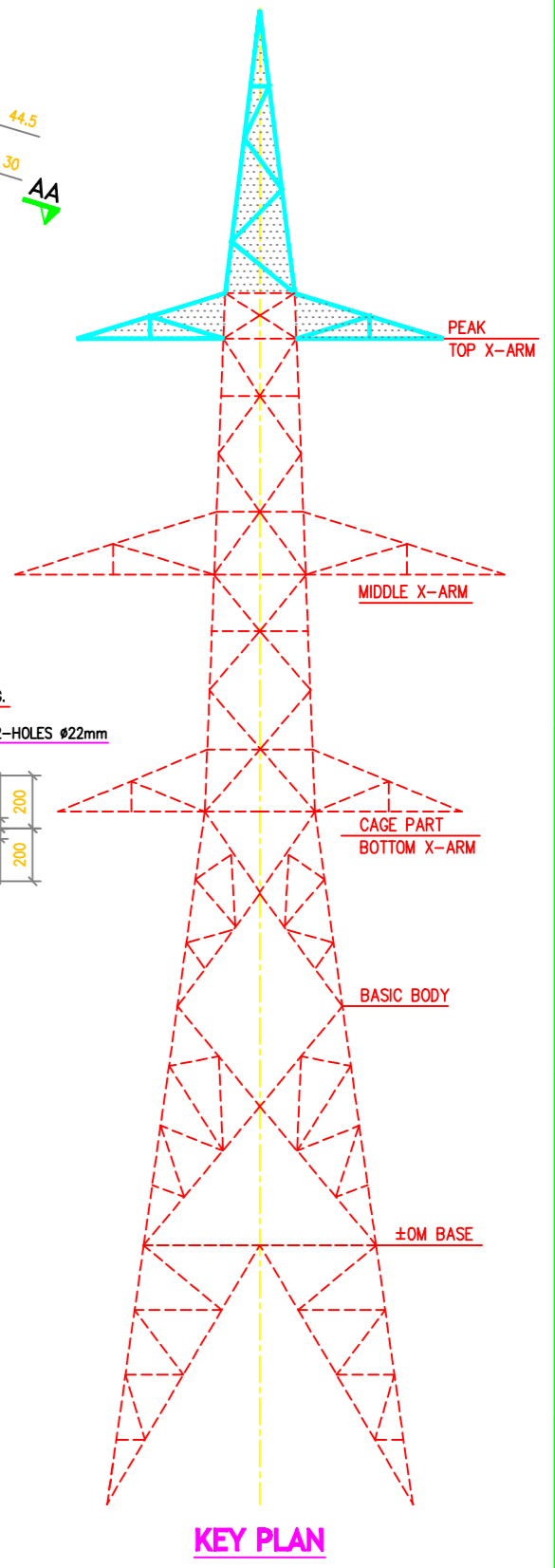
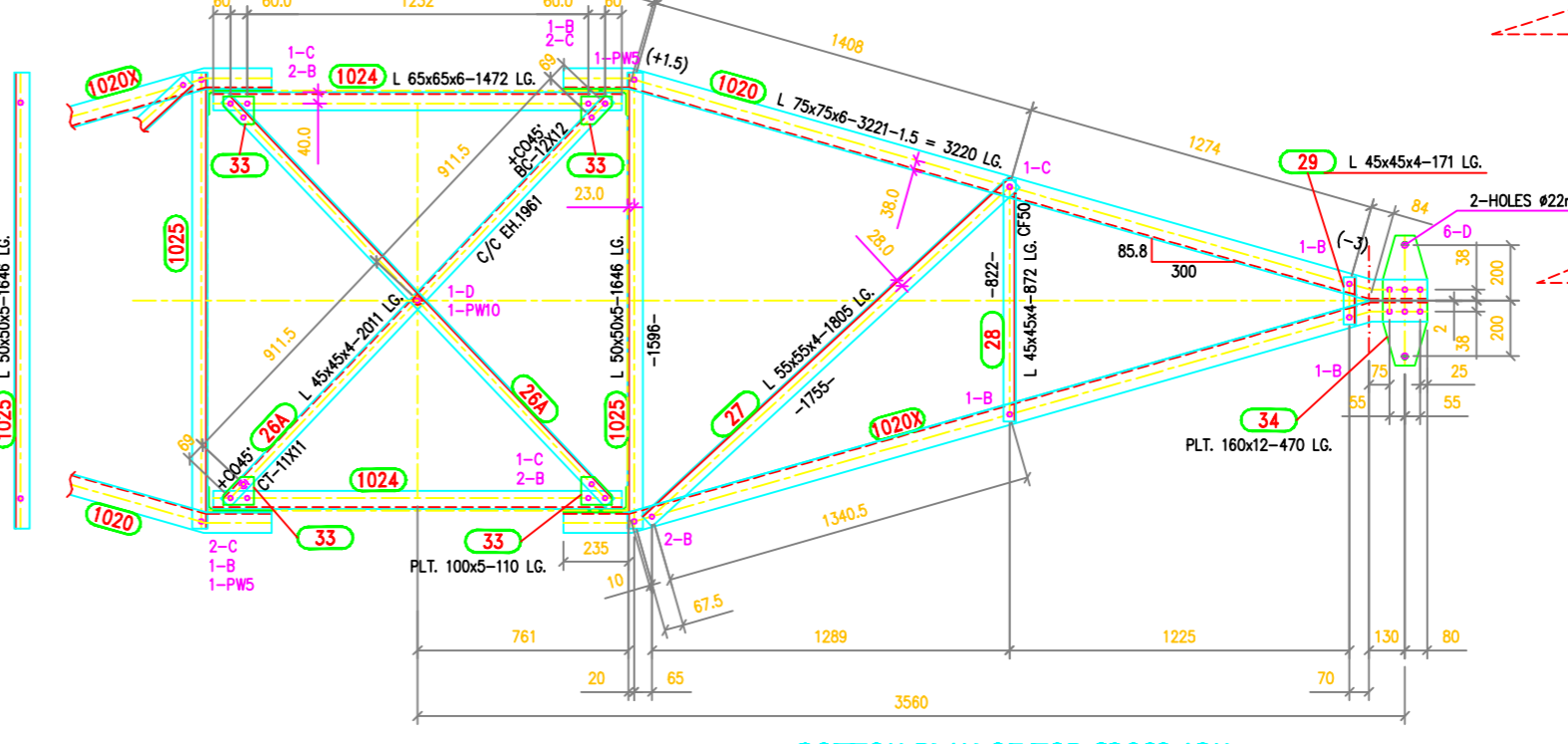
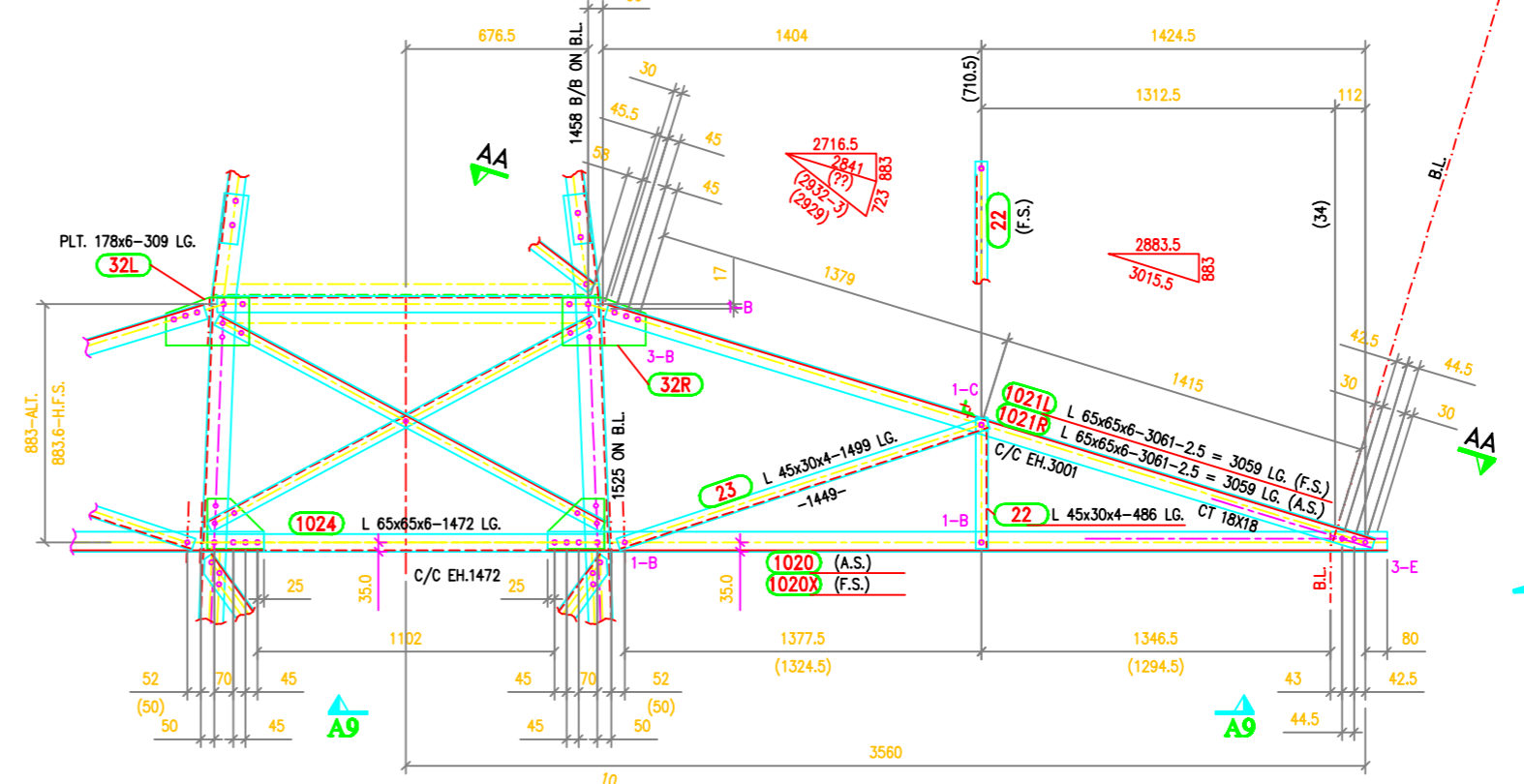
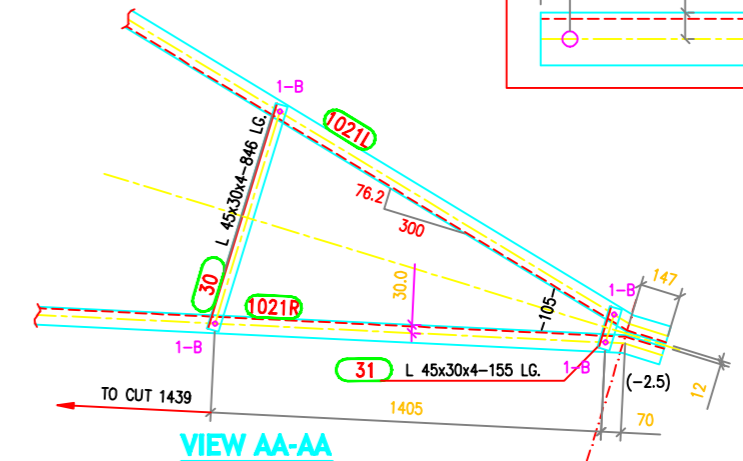
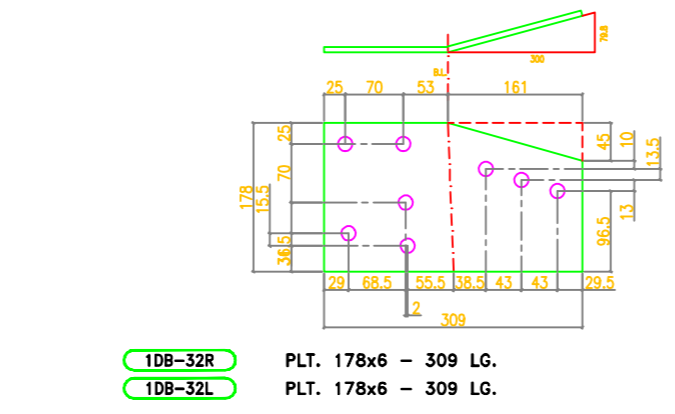
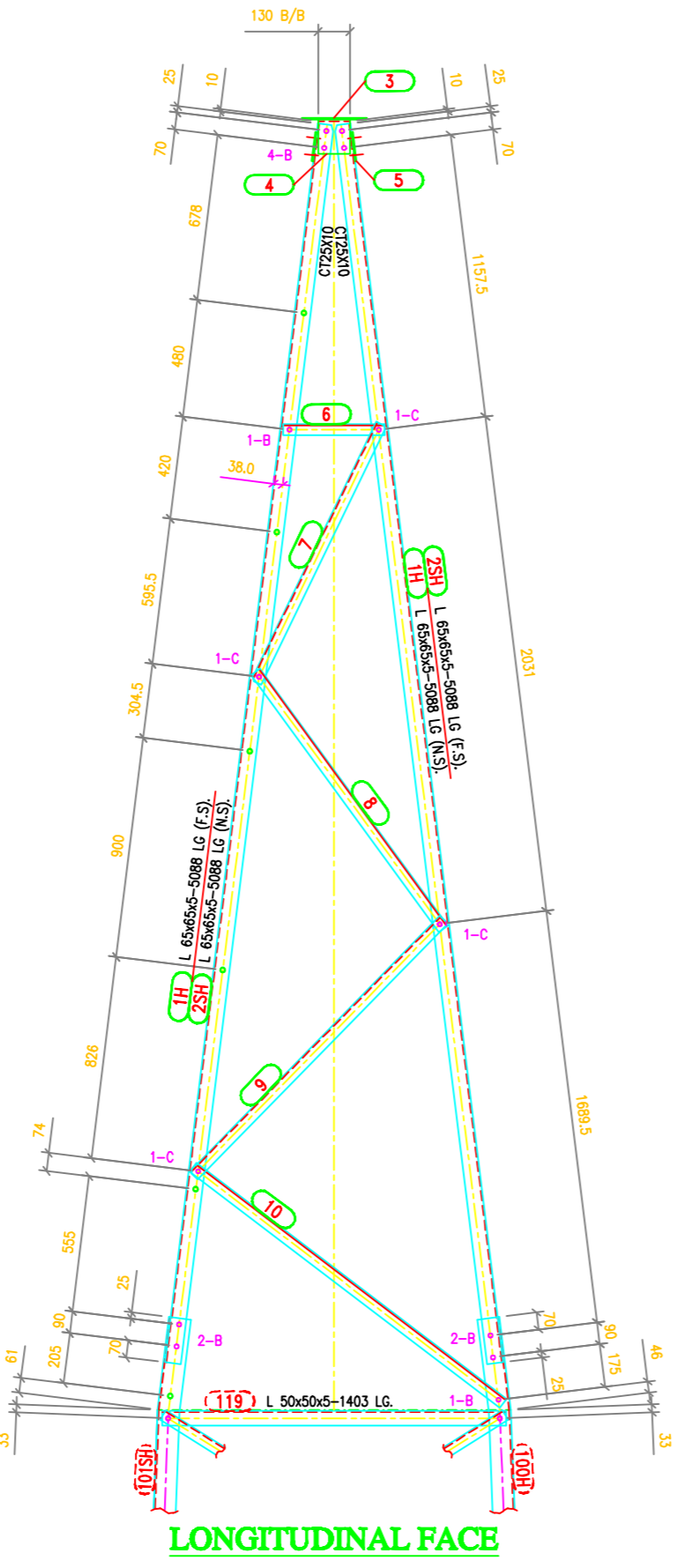
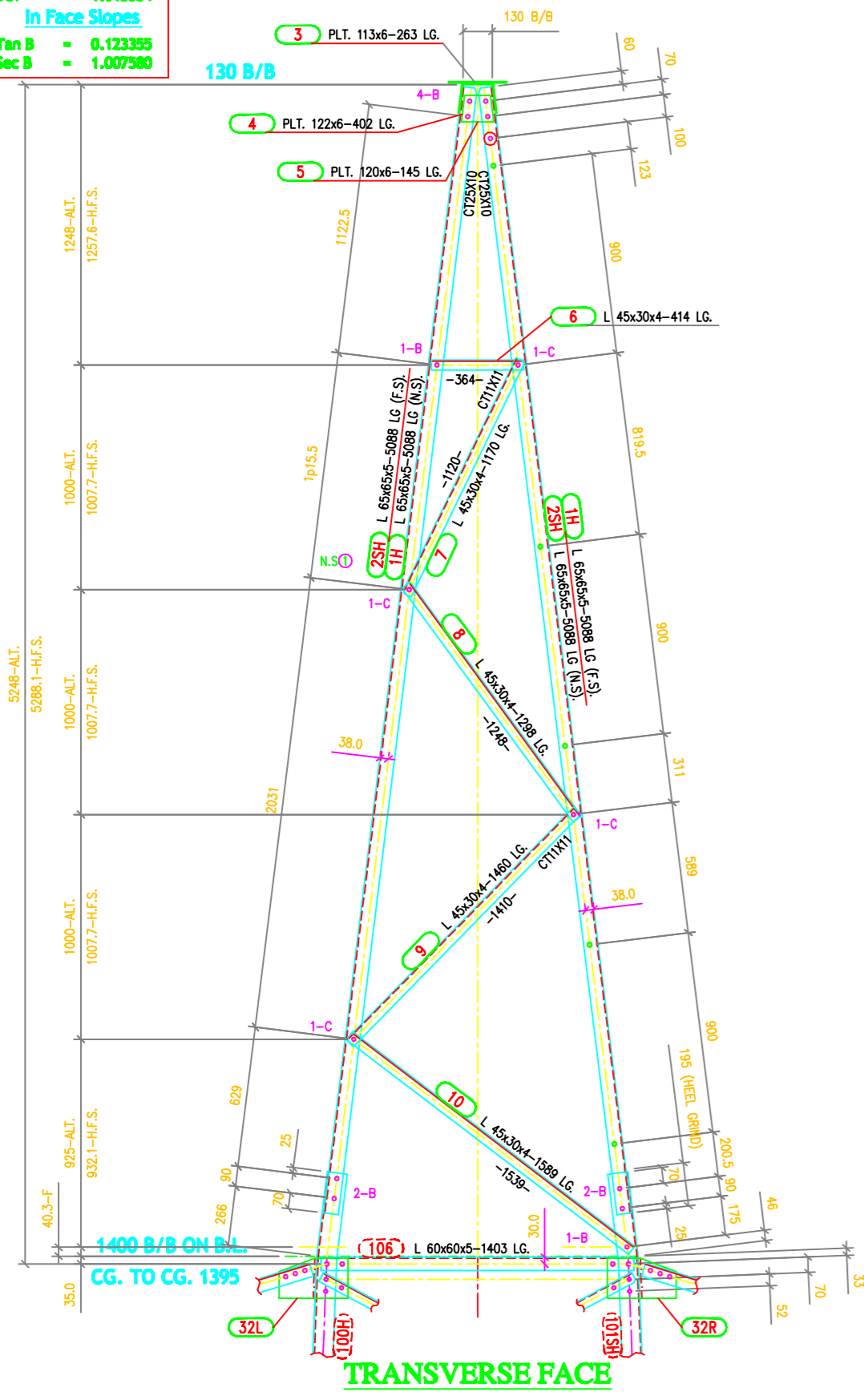


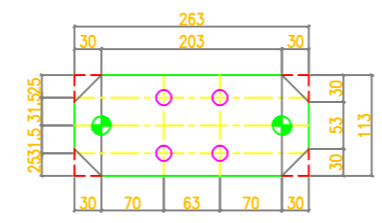
**TOWER SLOPE (FOR PEAK)**  
 Tan B = 0.124305  
 2 Tan B = 0.248610  
 Face = 1.007696  
 Dev = 1.015334

**In Face Slopes**  
 Tan B = 0.123355  
 Sec B = 1.007380

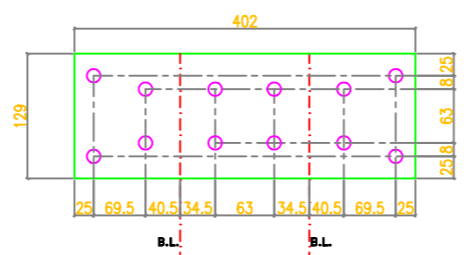


- GENERAL NOTES:**
- ALL DIMENSIONS ARE IN MM UNLESS OTHERWISE STATED.
  - MILD STEEL BOLTS & NUTS TO IS 6639/12427/4.6/5.6 Q.LTY.
  - ALL MILD STEEL BOLTS & NUTS ARE TO BE HOT DIP GALVANIZED AS PER IS 1367 PART-XIII.
  - ALL MILD STEEL BOLTS & NUTS ARE TO BE QUALITY CONFORMING TO IS. 2062 STANDARD.
  - GALVANISATION OF TOWER MEMBERS AND FLAT WASHERS AS PER IS. 2629.
  - ALL HOLES #13.5 FOR M12 BOLTS U.O.S.
  - ALL HOLES #17.5 FOR M16 BOLTS U.O.S.
  - ALL HOLES #21.5 FOR M20 BOLTS U.O.S.
  - ALL HOLES #17.5 FOR M16 STEP BOLTS U.O.S.
  - STANDARD SPRING WASHERS ARE TO BE USED UNDER EACH NUT.
  - ALL FABRICATED MEMBERS SHALL HAVE THE PREFIX...1DB
  - FOR SIZE OF BOLTS AND NUTS SEE TABLE OT-100
  - INDICATES MEMBERS BEING USED AS STEP-BOLTS.
  - FOR ..... SEE DRG. NO. S .....
  - FOR ..... SEE DRG. NO. S .....
  - FOR ..... SEE DRG. NO. S .....
  - STEP BOLTS ARE TO BE PROVIDED ON TWO DIAGONALLY OPPOSITE LEGS
  - (H) INDICATES HIGH TENSILE STEEL CONFORMING TO IS 8000 Gr.-490B QUALITY.
  - FOR ACCEPTANCE CRITERIA REFER MANUFACTURING QUALITY PLAN MFG-701.
  - CONTROL DIMENSIONS ARE SHOWN IN [ ]
  - [ ] INDICATES REVISED ITEM No. & SECTION SIZE
- CLIENT'S APPROVAL  
 1. APPROVED BY \_\_\_\_\_ VIDE LETTER No. \_\_\_\_\_ DATE \_\_\_\_\_  
 2. APPROVED BY \_\_\_\_\_ VIDE LETTER No. \_\_\_\_\_ DATED \_\_\_\_\_

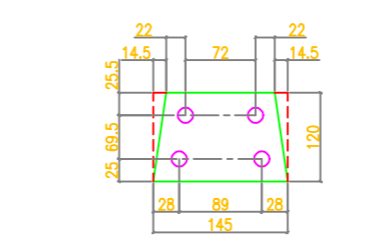
BOLTS AND NUTS STATEMENT:				
TYPE	SIZE (IN mm)	DB	DBR	QUANTITY
B	Ø16mm x 35mm	86	86	-
C	Ø16mm x 40mm	32	32	-
D	Ø16mm x 45mm	19	13	-
E	Ø16mm x 50mm	-	6	-
F	Ø16mm x 55mm	-	-	-
G	Ø16mm x 60mm	-	-	-
H	Ø16mm x 65mm	-	-	-
J	Ø16mm x 70mm	-	-	-
K	Ø16mm x 75mm	-	-	-
L	Ø16mm x 80mm	-	-	-
SPRING WASHERS		137	137	-
30 O.D. PACKING WASHERS Ø17.5mm				
	5 mm	2	2	-
	6 mm	-	-	-
	8 mm	-	-	-
	10 mm	1	1	-
STEP BOLTS Ø 16mm x 175mm		20	20	-



1DB-3 PLT. 113x8 - 263 LG.



1DB-4 PLT. 129x6 - 402 LG.



1DB-5 PLT. 120x6 - 145 LG.

MARK Nos. 1-10 , 20-34

BIHAR STATE POWER TRANSMISSION COMPANY LTD

DRAWN BY	DESCRIPTION	132KV D/C TOWER TYPE "DB" PEAK & TOP X-ARM	SCALE	-
CHECKED BY	DRG NO	132KV-D/C-Struct-Peak-Top-X-27	SHEET NO	1-1
APPROVED BY	DRG NO	132KV-D/C-Struct-Peak-Top-X-27	REV.	0