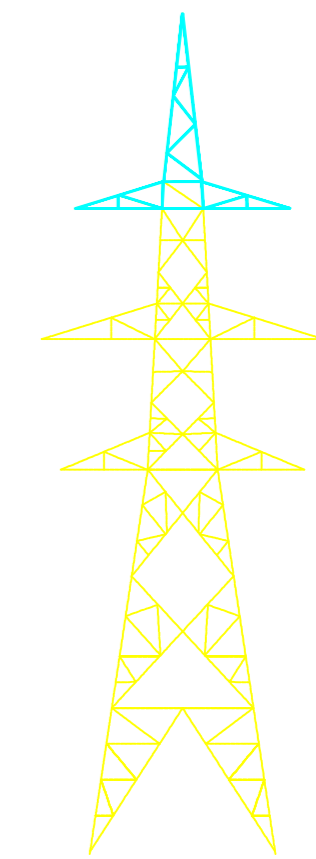
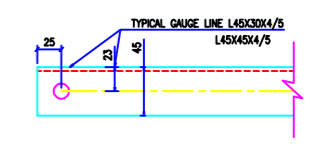


VERTICAL SLOPE

TWB = 1:1.013791
 ZTWB = 1:1.013791
 FACE = 1:1.013791
 DEVELOP = 1:1.013791
 BLUICE SLOPE = 1:1.013791
 TWB = 1:1.013791
 ZTWB = 1:1.013791

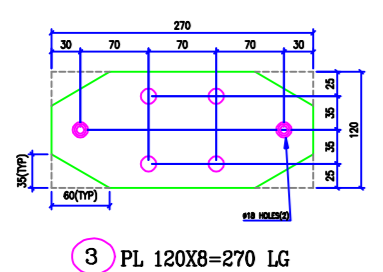


BOLTS AND NUTS STATEMENT

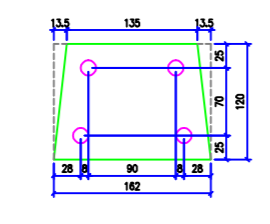
TYPE	SIZE (IN MM)	QUANTITY	
		DC	DCR
B	# 16X35	110	110
C	# 16X40	13	13
D	# 16X45	12	9
E	# 16X50	-	3
F	# 16X55	-	-
G	# 16X60	-	-
H	# 16X65	-	-
J	# 16X70	-	-
K	# 16X75	-	-
L	# 16X80	-	-
SPRING WASHERS		135	135
30 O.D. PACKING WASHERS # 17.5 MM			
	5 mm	3	3
	6 mm	-	-
	8 mm	-	-
	10 mm	-	-
STEP BOLTS #16 mm X 175mm		20	20

- GENERAL NOTES:**
1. ALL DIMENSIONS ARE IN MM UNLESS OTHERWISE SPECIFIED.
 2. MILD STEEL BOLT AND NUTS TO IS 8839/12427/5.6 Q17Y
 3. ALL MILD STEEL BOLT AND NUTS ARE TO BE HOT DIP GALVANISED AS PER IS 1857 PART-3/B
 4. ALL MILD STEEL SECTIONS SHALL BE OF TESTED QUALITY CONFORMING TO IS 2062 STANDARD
 5. GALVANIZATION OF TOWER MEMBERS AND FLAT WASHERS AS PER IS 2829
 6. # ALL HOLES # 13.5mm FOR #12mm BOLTS
 7. # ALL HOLES # 17.5mm FOR #16mm BOLTS
 8. # ALL HOLES # 21.5mm FOR #20mm BOLTS
 9. # ALL HOLES # 25.5mm FOR #25mm STEP BOLTS
 10. STANDARD SPRING WASHERS ARE TO BE USED UNDER EACH NUT
 11. ALL FABRICATED MEMBERS SHALL HAVE 'PRT'X
 12. # INDICATES MEMBERS BEING USED AS STEP BOLTS.
 13. STEP BOLTS ARE TO BE PROVIDED ON TWO DIAGONALLY OPP. LEGS

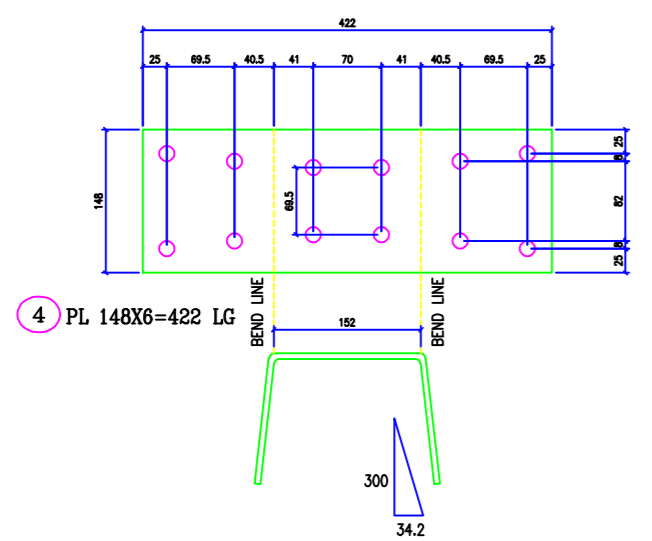
MARK NO: 1 + 12 20 + 39X



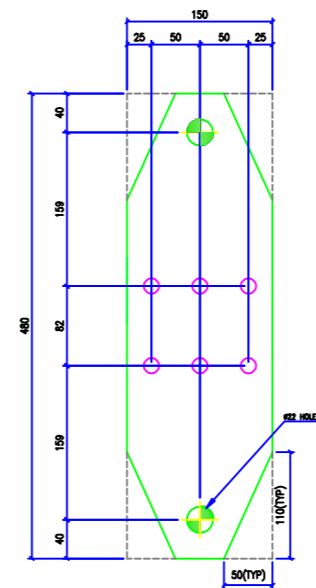
3 PL 120X8=270 LG



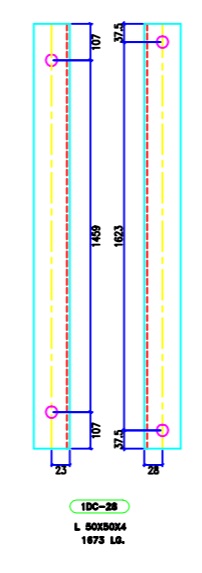
5 PL 120X6=162 LG



4 PL 148X6=422 LG



31 PL 150X12=480 LG



190-28 L 100X80=182 LG

BIHAR STATE POWER TRANSMISSION COMPANY LTD

DRAWN BY		DESCRIPTION	132KV D/C TOWER TYPE "DC" DETAIL OF PEAK & TOP 'X' ARM	SCALE	-
CHECKED BY					
APPROVED BY					
DRG NO	132KV-D/C-Struct-Peak-Top-X-36	SHEET NO 1-1	REV.	0	