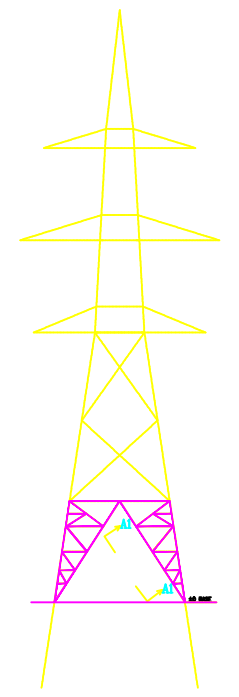
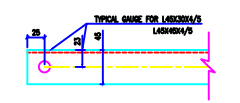
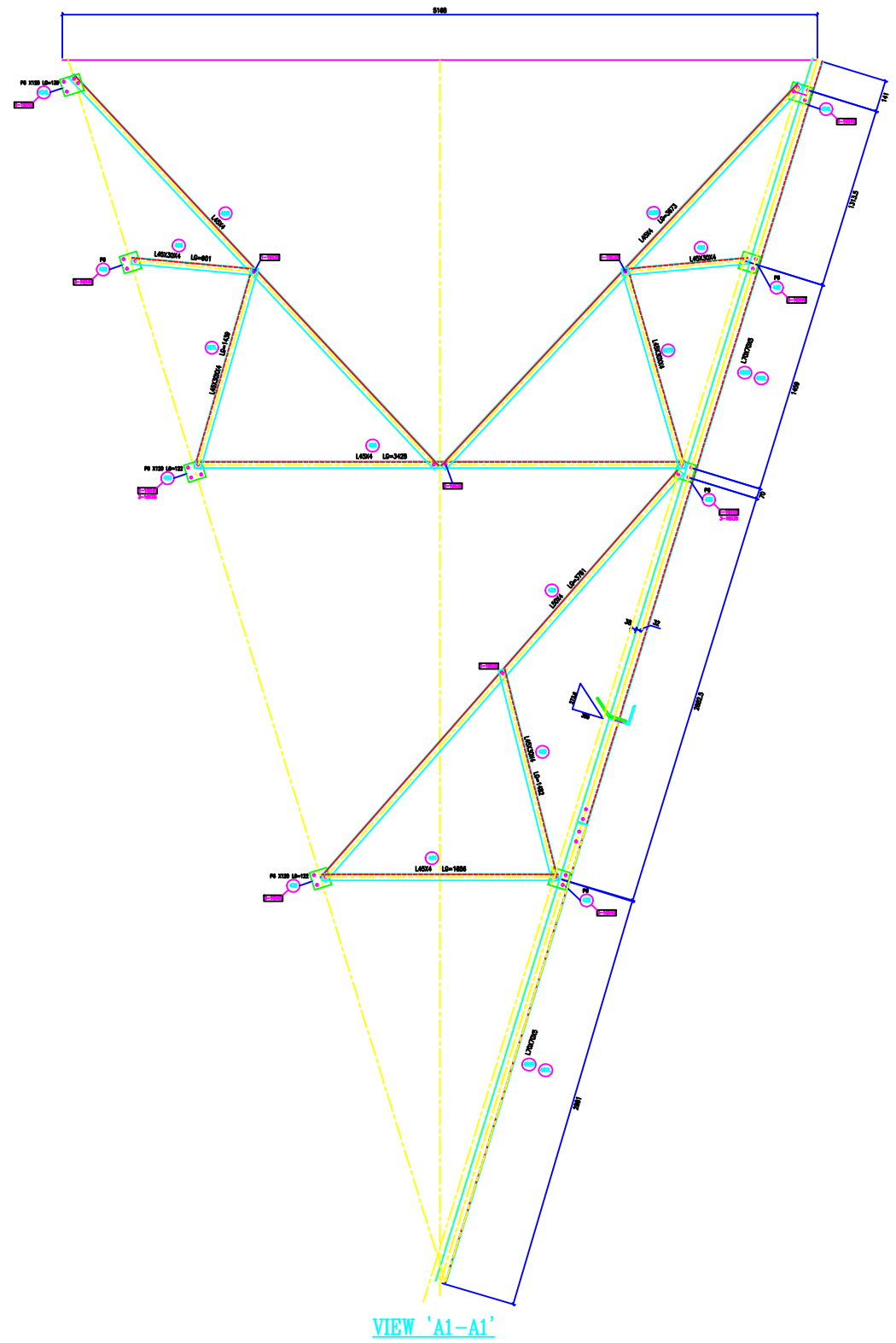
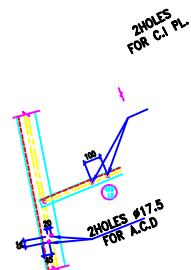
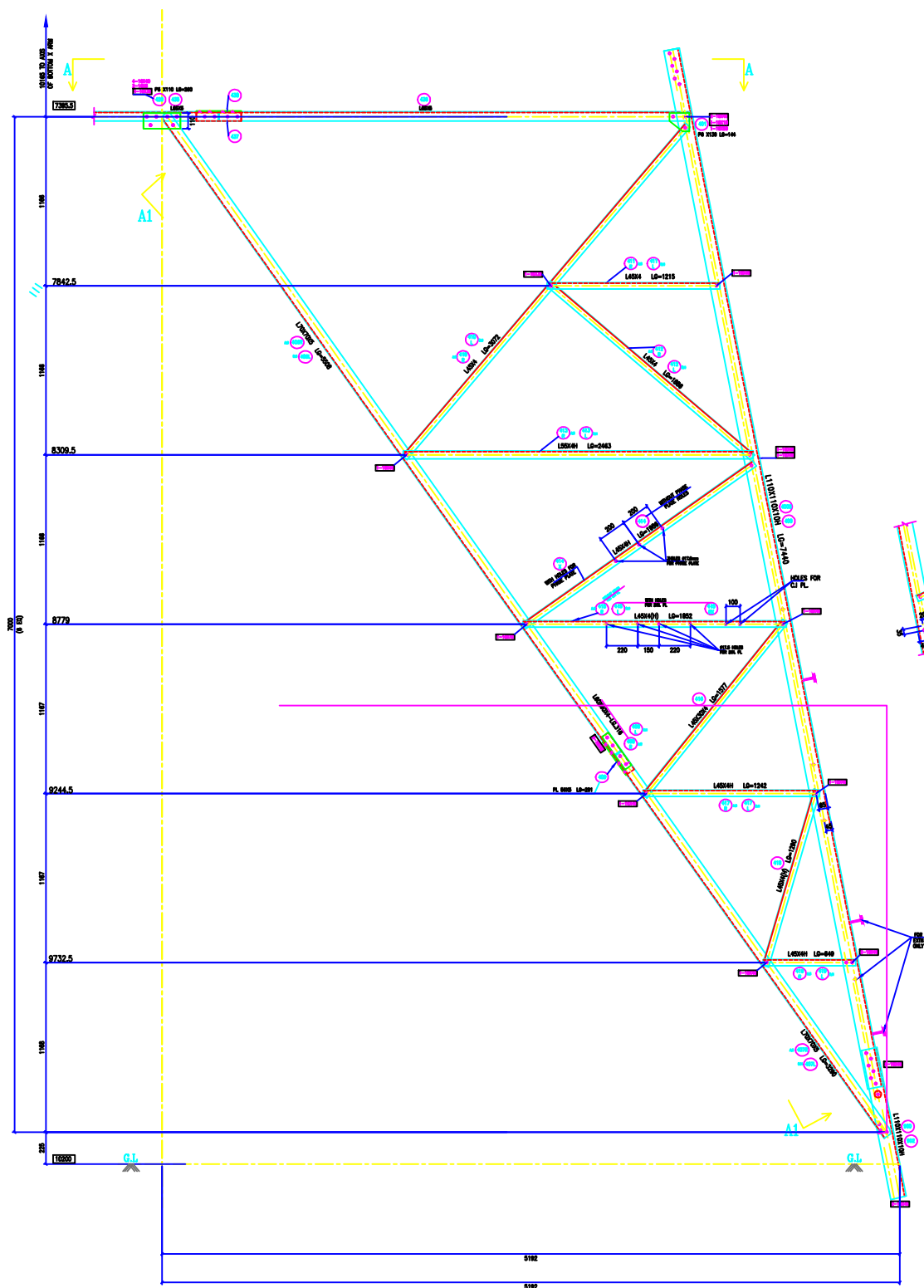


VERTICAL SCALE
 1MM = 0.00500
 2MM = 0.01000
 FACE = 1.01000
 DEVELOP = 1.03000
 H. FACE SCALE
 1MM = 0.10000
 2MM = 0.20000



BOLTS AND NUTS STATEMENT

| TYPE | SIZE (IN MM) | QUANTITY |
|-----------------------------------|--------------|----------|
| B | # 16X35 | 140 |
| C | # 16X40 | 168 |
| D | # 16X45 | 88 |
| E | # 16X50 | 4 |
| F | # 16X55 | - |
| G | # 16X60 | - |
| H | # 16X65 | - |
| J | # 16X70 | - |
| K | # 16X75 | - |
| L | # 16X80 | - |
| SPRING WASHERS | | 400 |
| 30 O.D. PACKING WASHERS # 17.5 MM | | |
| | 5 mm | 8 |
| | 6 mm | - |
| | 8 mm | - |
| | 10 mm | - |
| STEP BOLTS #16 mm X 175mm | | 12 |

GENERAL NOTES:
 1. ALL DIMENSIONS ARE IN mm UNLESS OTHERWISE SPECIFIED.
 2. MILD STEEL BOLT AND NUTS TO IS 8838/12427/5.6 QLT Y
 3. ALL MILD STEEL BOLT AND NUTS ARE TO BE HOT DIP GALVANISED AS PER ASTM A153
 4. ALL MILD STEEL SECTIONS SHALL BE OF TESTED QUALITY CONFORMING TO IS 2062 STANDARD
 5. GALVANIZATION OF TOWER MEMBERS AND FLAT WASHERS AS PER IS 2829
 6. ALL HOLES # 13.5mm FOR #12mm BOLTS
 7. ALL HOLES # 17.5mm FOR #16mm BOLTS
 8. ALL HOLES # 21.5mm FOR #20mm BOLTS
 9. ALL HOLES # 17.5mm FOR #16mm STEP BOLTS
 10. STANDARD SPRING WASHERS ARE TO BE USED UNDER EACH NUT
 11. ALL FABRICATED MEMBERS SHALL HAVE PROTECTIVE PAINT
 12. INDICATES MEMBERS BEING USED AS STEP BOLTS.
 13. STEP BOLTS ARE TO BE PROVIDED ON TWO DIAGONALLY OPP. LEGS

MARK NO: 400 + 420 & 425 + 434

BIHAR STATE POWER TRANSMISSION COMPANY LTD

| | | | | | |
|-------------|--|-------------|---|--------------|--------|
| DRAWN BY | | DESCRIPTION | 220KV D/C TOWER TYPE "2DC" DETAIL OF ±0 BASE | SCALE | - |
| CHECKED BY | | DRG NO | 220KV-D/C-Struct-±0M -Base-32 | SHEET NO 1-1 | REV. 0 |
| APPROVED BY | | | | | |