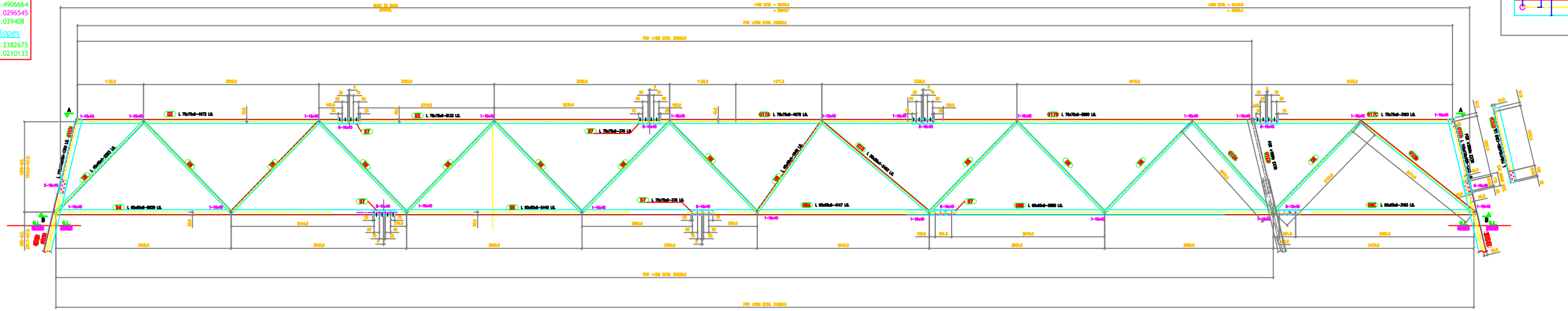
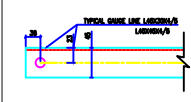


TOWER SLOPE
(FOR ±0M TOWER-00)

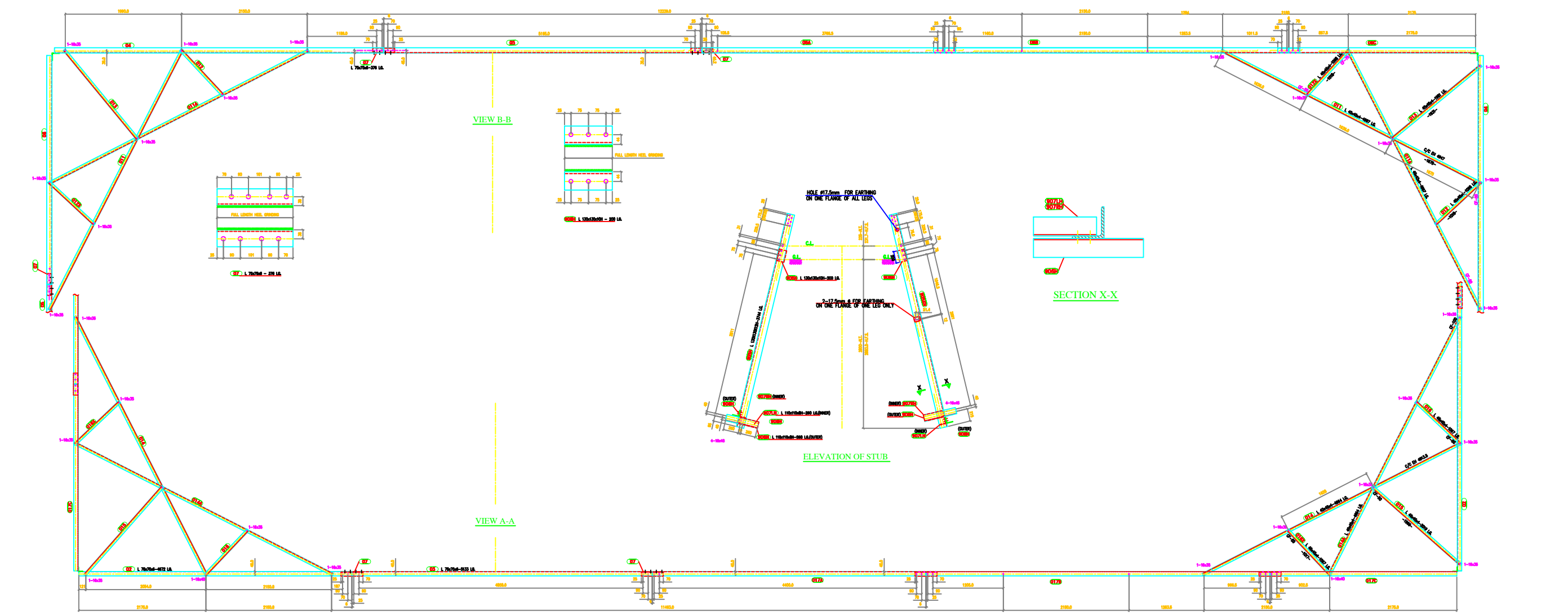
Tan B = 0.2453332
 2 Tan B = 0.4906664
 Face = 1.0296545
 Dev = 1.039408

In Face Slopes

Tan B = 0.2382675
 Sec B = 1.0210133



ELEVATION OF TEMPLATE



ELEVATION OF STUB

MARK Nos. 01 TO 017 FOR STUB SETTING TEMPLATE
 MARK Nos. 900 TO 903 FOR STUB

GENERAL NOTES :

- ALL DIMENSIONS ARE IN "mm" UNLESS OTHERWISE SPECIFIED.
- ALL ERECTION MARKS ARE TO BE PREFIXED WITH - "2DD"
- INDICATES #17.5 HOLE FOR M16 BOLT U.O.S.
- STRUCTURAL STEEL SHALL BE AS FOLLOWS
 (i) MILD STEEL - IS:2062 WITH YIELD STRESS Fy-2550 KG/SQ.CM.
 (ii) HIGH TENSILE STEEL - IS:8500 GR490B
- BOLTS AND NUTS AS PER IS:12427 - 1988. CONFORM TO GRADE-5.6
- GALVANISING SHALL CONFORM TO IS:2629-1985 & IS:4759-1996.
- SPRING WASHER SHALL BE CONFORM TO IS 3063-1994
- STEP BOLTS SHALL BE DIAGONALLY OPPOSITE SIZES
- STEP BOLTS SHALL BE IS:10238-1982
- SUFFIX "H" INDICATES HIGH TENSILE STEEL

SUMMARY OF BOLTS FOR STUB & STUB SETTING TEMPLATE				
BOLT SIZE	QUANTITY FOR TEMPLATE	QUANTITY FOR STUB GRADE	REMARKS	
16# x 35 LG	48	0	5.6	-
16# x 40 LG	298	-	5.6	-
16# x 45 LG	48	32	5.6	-
16# x 50 LG	-	-	5.6	-
16# x 55 LG	-	-	5.6	-
16# x 60 LG	-	-	5.6	-
16# x 65 LG	-	-	5.6	-
16# x 3.5 THK	394	32		SPRING WASHERS

DRAWN BY
 CHECKED BY
 APPROVED BY

BIHAR STATE POWER TRANSMISSION COMPANY LTD

DESCRIPTION: 220KV D/C TOWER TYPE "2DD"
 +18Mr & +25Mr STUB & TEMPLATE

DRG NO: 220KV-D/C-Struct-+18-+25M-Stub-Temp-414

SCALE: -

SHEET NO 1-1 REV. 0