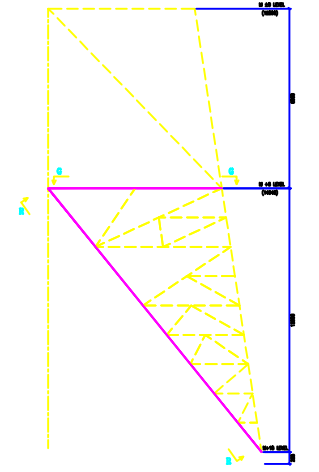
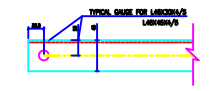
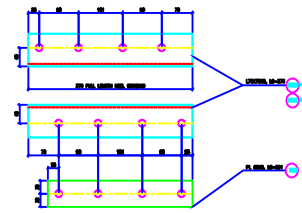
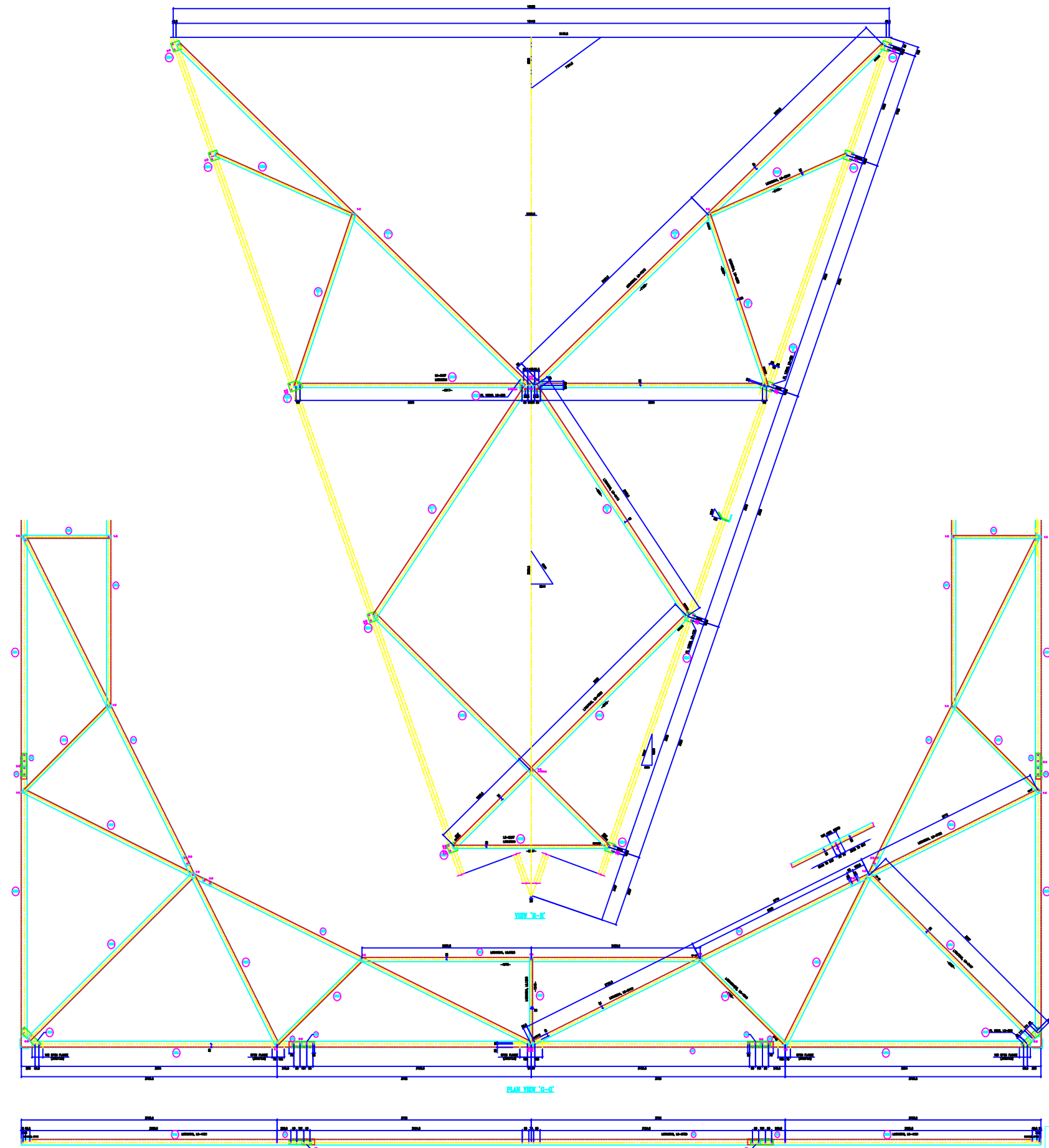


VERTICAL SLICE
 TWRD = 0.34550
 ZWRD = 0.00212
 FACE = 1.00000
 DEVELOP = 1.00000
 H. FACE SLICE
 TWRD = 0.328197
 ZWRD = 1.02709



BOLTS AND NUTS STATEMENT

TYPE	SIZE (IN MM)	QUANTITY		
		PLAN G-G	VIEW R-R	TOTAL
B	# 16X30	56	120	176
C	# 16X40	88	44	132
D	# 16X45	4	8	12
E	# 16X50	-	-	-
F	# 16X55	-	-	-
G	# 16X60	-	-	-
H	# 16X65	-	-	-
J	# 16X70	-	-	-
K	# 16X75	-	-	-
L	# 16X80	-	-	-
SPRING WASHERS		148	172	320
30 O.D. PACKING WASHERS # 17.5 MM				
	5 mm	4	-	4
	6 mm	-	12	12
	8 mm	-	-	-
	10 mm	-	-	-
STEP BOLTS #16 mm X 175mm		-	-	-

GENERAL NOTES:

1. ALL DIMENSIONS ARE IN MM UNLESS OTHERWISE SPECIFIED.
2. MILD STEEL BOLT AND NUTS TO ISHRM/IS427/IS4 GUTY
3. ALL MILD STEEL BOLT AND NUTS ARE TO BE HOT DIP GALVANISED AS PER ISM 8150
4. ALL MILD STEEL SECTIONS SHALL BE OF TESTED QUALITY CONFORMING TO IS 2002 STANDARD
5. MAINTENANCE OF TOWER MEMBERS AND FLAT WASHERS AS PER IS 2002
6. ALL HOLES # 18.0mm FOR #16mm BOLTS
7. ALL HOLES # 17.5mm FOR #16mm BOLTS
8. ALL HOLES # 21.0mm FOR #20mm BOLTS
9. ALL HOLES # 17.5mm FOR #16mm STEP BOLTS
10. STANDARD SPRING WASHERS ARE TO BE USED UNDER EACH NUT
11. ALL FABRICATED MEMBERS SHALL HAVE PROTECTIVE PAINT
12. CORROSION RESISTANT MEMBERS USED AS STEP BOLTS
13. STEP BOLTS ARE TO BE PROVIDED ON TWO DIAGONALLY OPP. LEGS

600 + 610, 615 + 624

BIHAR STATE POWER TRANSMISSION COMPANY LTD

DRAWN BY		DESCRIPTION 220KV D/C TOWER TYPE "2DD" DETAIL OF PLAN VIEW "G-G" & OBLIQUE VIEW "R-R" (+18M EXTN.)	SCALE	-
CHECKED BY			DRG NO	220KV-D/C-Struct-+18M-Extn-Oblique -411
APPROVED BY			SHEET NO 1-1	REV. 0