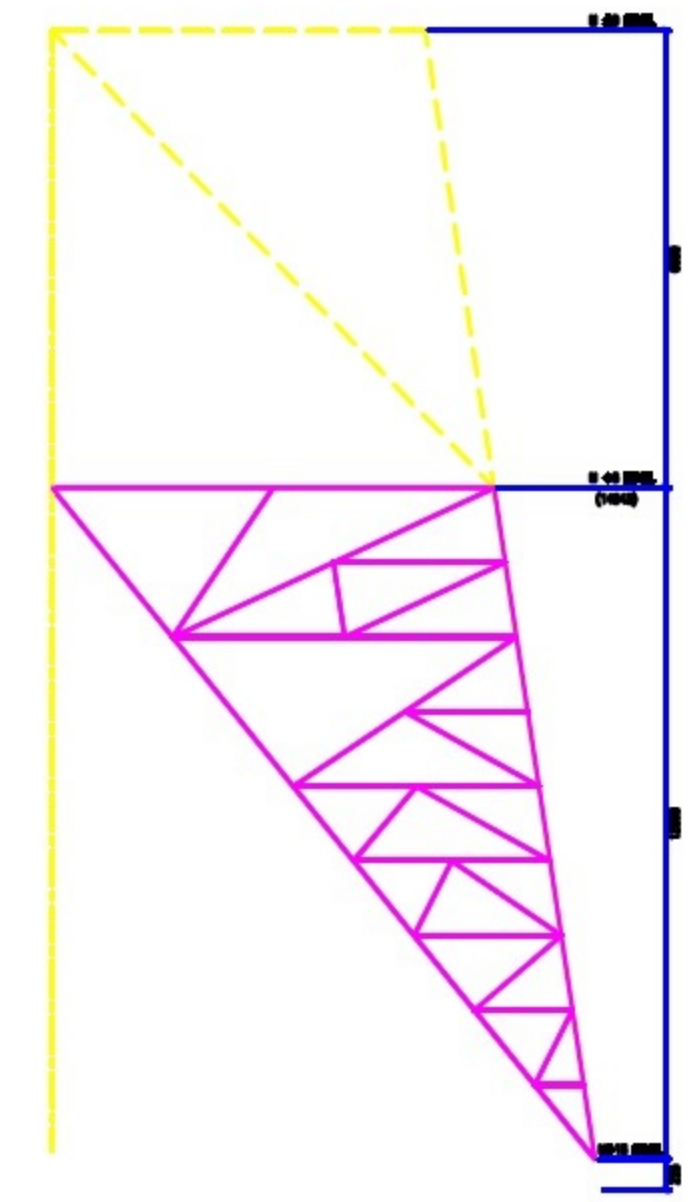
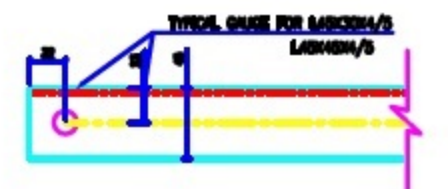
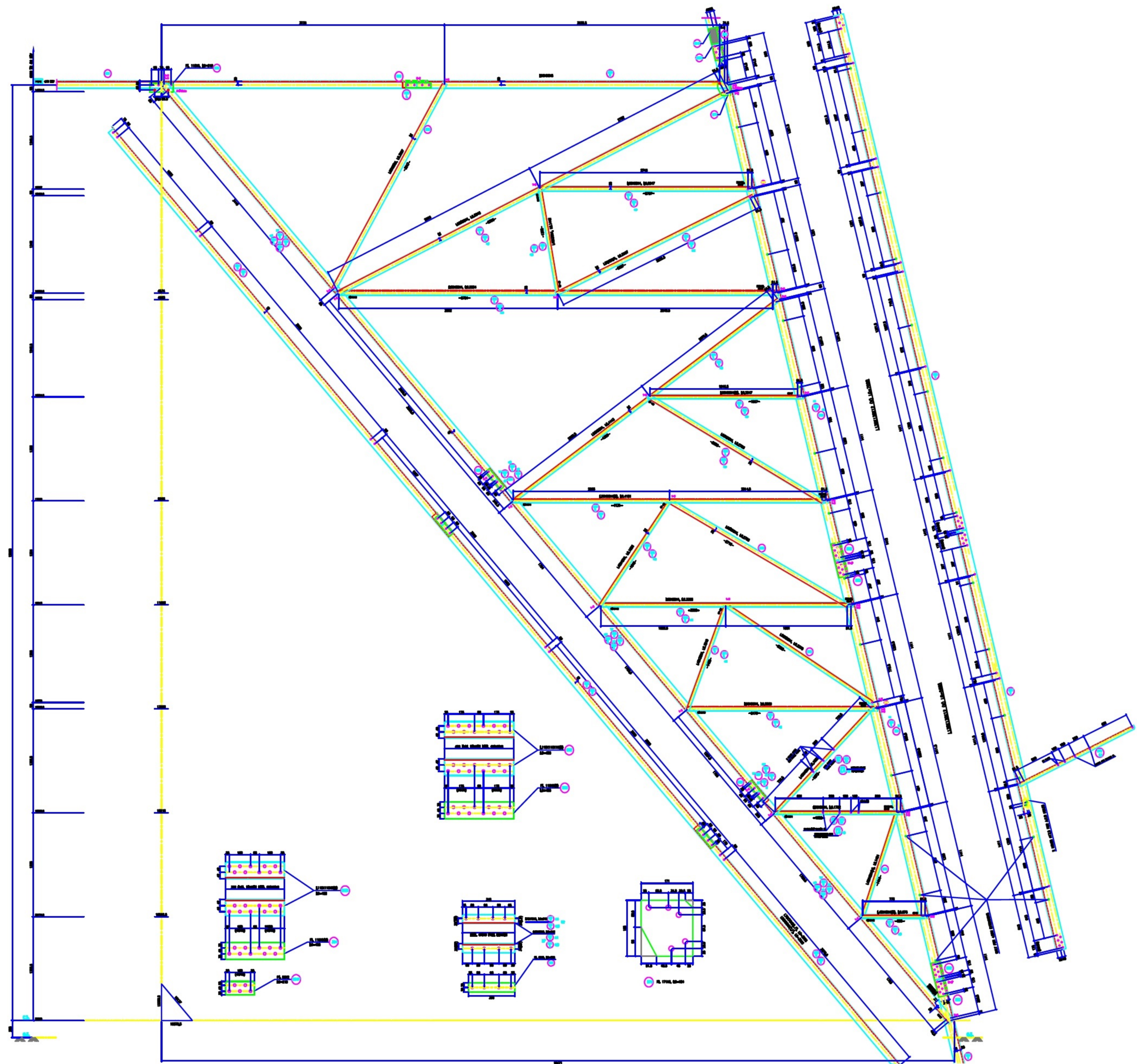


700 = 0.24000
 2000 = 0.40012
 10000 = 1.00000
 100000 = 1.00000
 700 = 0.23817
 2000 = 1.02770



BOLTS AND NUTS STATEMENT

TYPE	SIZE (IN MM)	QUANTITY
B	# 10X35	84
C	# 10X40	256
D	# 10X45	84
E	# 10X30	24
F	# 10X35	192
G	# 10X80	--
H	# 10X85	--
J	# 10X70	--
K	# 10X75	--
L	# 10X80	--
SPRING WASHERS		640
30 O.D. PACKING WASHERS # 17.5 MM		
5 mm		--
8 mm		24
10 mm		--
STEP BOLTS #16 mm X 175mm		27

- GENERAL NOTES:**
1. ALL DIMENSIONS ARE IN mm UNLESS OTHERWISE SPECIFIED.
 2. HSD STEEL BOLT AND NUTS TO BS888/BS887/BS 889.
 3. ALL HSD STEEL BOLT AND NUTS ARE TO BE HOT DIP GALVANIZED AS PER IS 1181.
 4. ALL HSD STEEL SECTIONS SHALL BE OF BEST QUALITY COMPLYING TO IS 2062 STANDARD.
 5. CONNECTION OF TOWER SECTIONS AND PLAT WASHERS AS PER IS 2062.
 6. ALL BOLTS # 16mm FOR #16mm BOLTS.
 7. ALL BOLTS # 17.5mm FOR #17.5mm BOLTS.
 8. ALL BOLTS # 24mm FOR #24mm BOLTS.
 9. ALL BOLTS # 17.5mm FOR #17.5mm STEP BOLTS.
 10. STANDARD SPRING WASHERS ARE TO BE USED UNDER EACH NUT.
 11. ALL DIMENSIONS UNLESS SPECIFIED SHALL BE IN mm.
 12. CONNECTIONS BETWEEN STEEL LEGS AS STEP BOLTS.
 13. STEP BOLTS ARE TO BE PROVIDED ON TWO DIAGONALLY OPP. LEGS.

550 + 584, 303X, 304, 304P

BIHAR STATE POWER TRANSMISSION COMPANY LTD

DRAWN BY		DESCRIPTION	220KV D/C TOWER TYPE "2DD" DETAIL OF +18Mtr EXTENSION (TOP PART +25M EXTN.)	SCALE	-
CHECKED BY					
APPROVED BY					
DRG NO	220KV-D/C-Struct-+18M-Extn-Top-+25M-Extn-418	SHEET NO	1-1	REV.	0