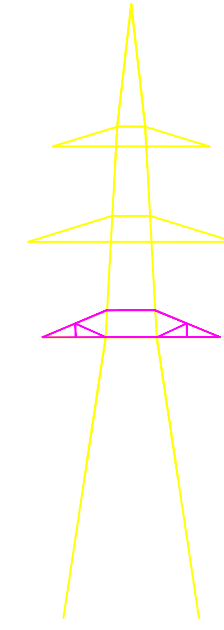
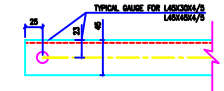
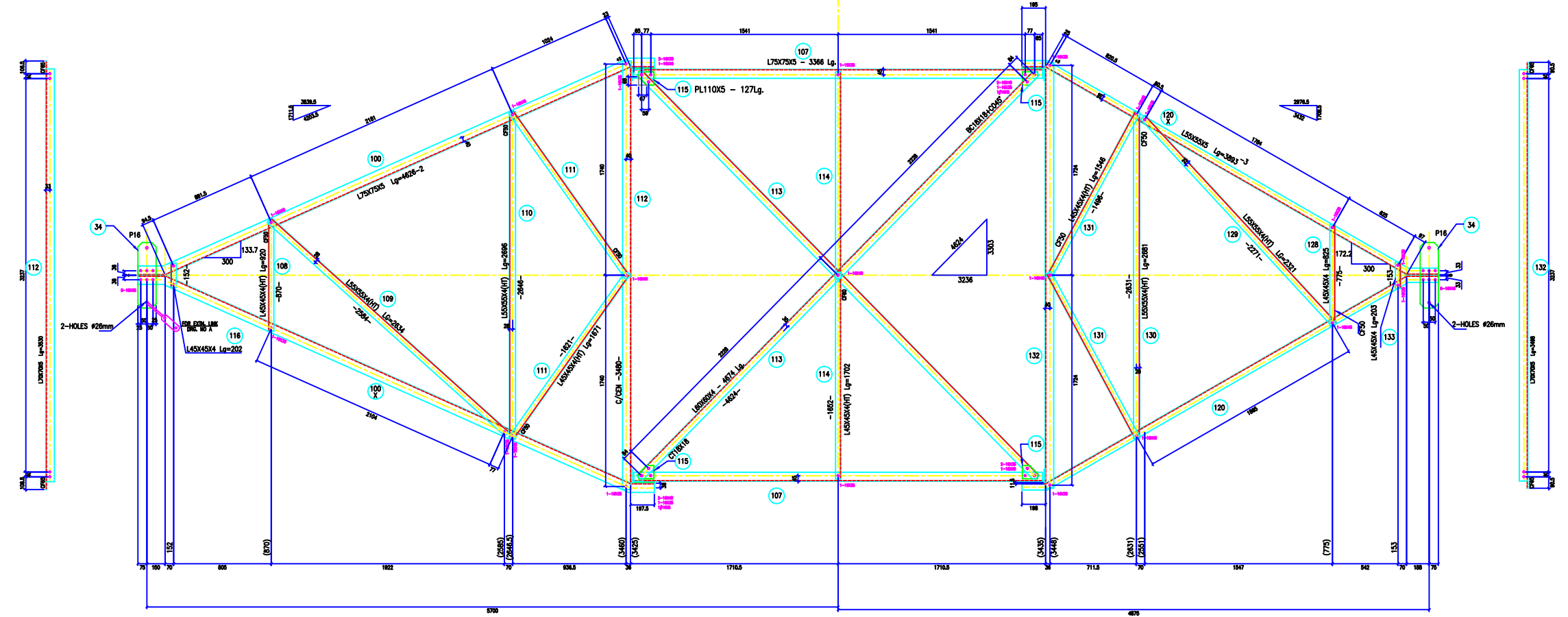
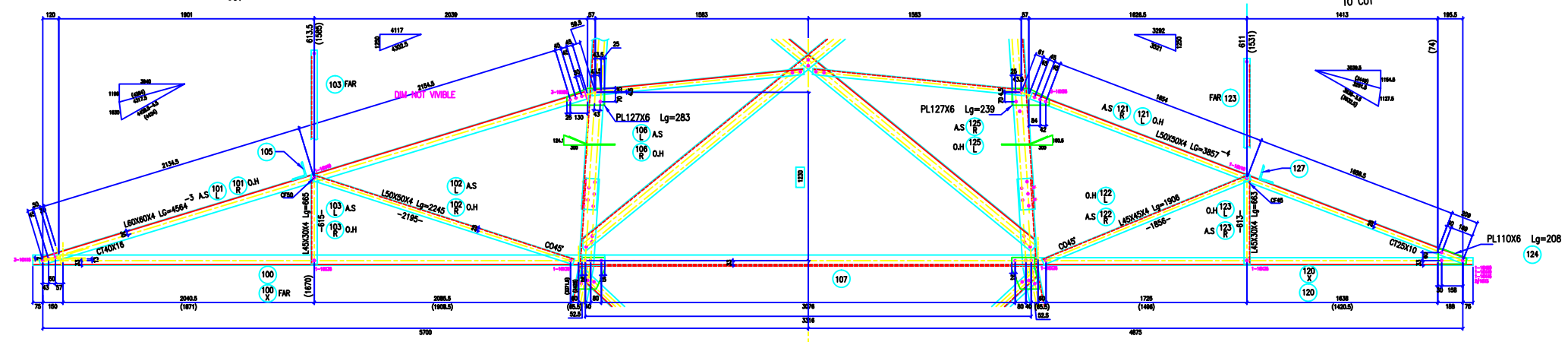
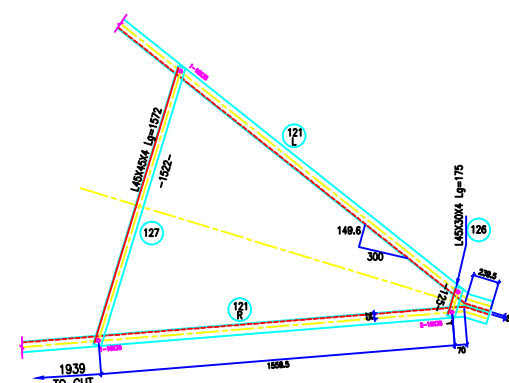
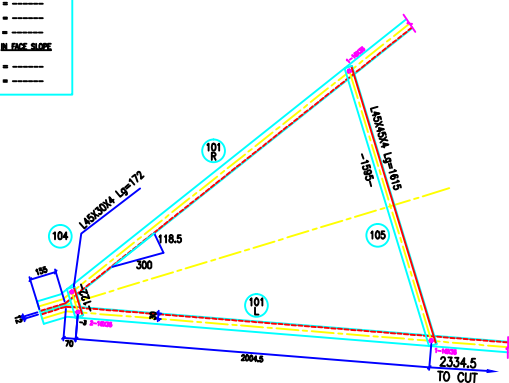


VERTICAL SCALE
 1mm = 10m
HORIZONTAL SCALE
 1mm = 10m



BOLTS AND NUTS STATEMENT

TYPE	SIZE (H MM)	QUANTITY
B	# 16X35	46
C	# 16X40	20
D	# 16X45	16
E	# 16X50	1
F	# 16X55	-
G	# 16X60	-
H	# 16X65	-
J	# 16X70	-
K	# 16X75	-
L	# 16X80	-
SPRING WASHERS		83
30 O.D PACKING WASHERS # 17.5 MM		
5 mm		4
6 mm		-
8 mm		-
10 mm		-
STEP BOLTS #16 mm X 175mm		
		-

- GENERAL NOTES:**
1. ALL DIMENSIONS ARE IN MM UNLESS OTHERWISE SPECIFIED.
 2. WELD STEEL BOLT AND NUTS TO IS 8006/15437/5.8 QTY.
 3. ALL WELD STEEL BOLT AND NUTS ARE TO BE HOT DIP GALVANIZED AS PER ASTM A153.
 4. ALL WELD STEEL SECTIONS SHALL BE OF TESTED QUALITY CONFORMING TO IS 8006 STANDARD.
 5. GALVANIZATION OF TOWER MEMBERS AND FLAT WASHERS AS PER IS 2659.
 6. ALL HOLES # 16mm FOR #16mm BOLTS.
 7. ALL HOLES # 17.5mm FOR #17.5mm STEP BOLTS.
 8. ALL HOLES # 21.5mm FOR #20mm BOLTS.
 9. ALL HOLES # 17.5mm FOR #16mm STEP BOLTS.
 10. STANDARD SPRING WASHERS ARE TO BE USED UNDER EACH NUT.
 11. ALL FABRICATED MEMBERS SHALL HAVE PUFFS.
 12. CIRCULATES MEMBERS BEING USED AS STEP BOLTS.
 13. STEP BOLTS ARE TO BE PROVIDED ON TWO DIAGONALLY OPP. LEGS.

MARK NO: 100 + 116, 120 + 133

BIHAR STATE POWER TRANSMISSION COMPANY LTD			
DRAWN BY	DESCRIPTION	220KV D/C TOWER TYPE "2DC" DETAIL OF BOTTOM CROSS ARM	SCALE
CHECKED BY	DRG NO	220KV-D/C-Struct-Bottom-X-35	-
APPROVED BY	SHEET NO	1-1	REV. 0