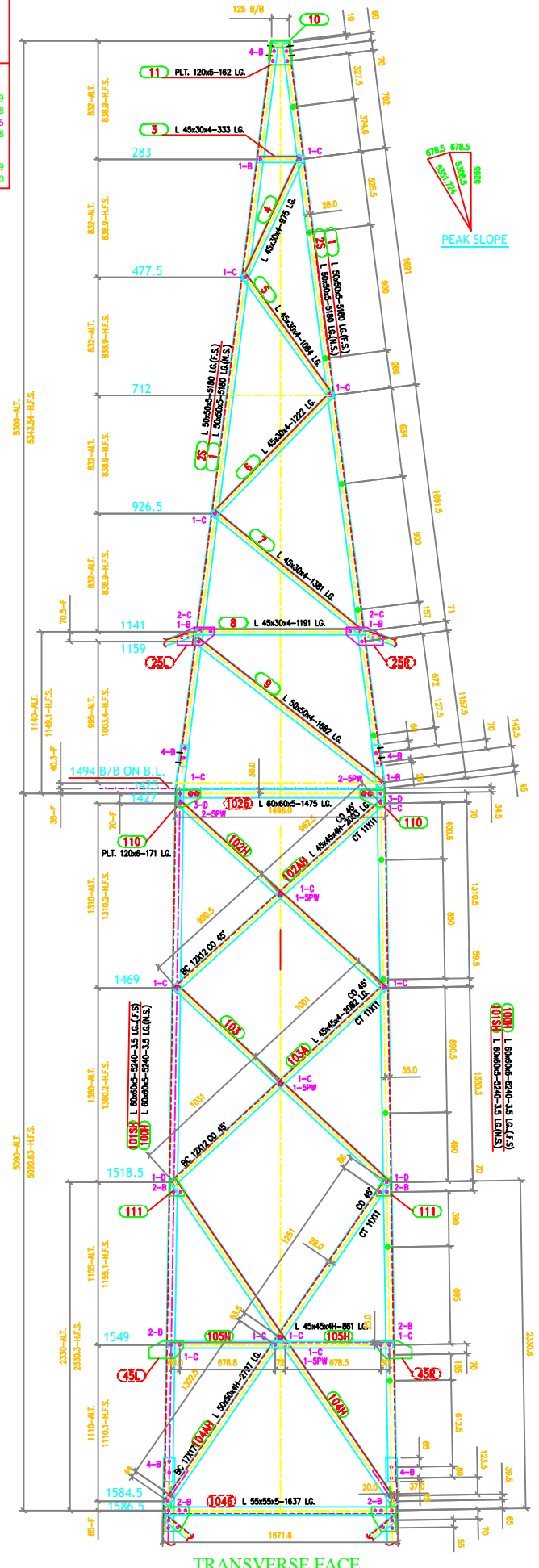
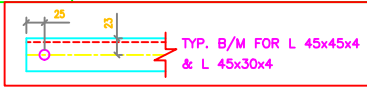
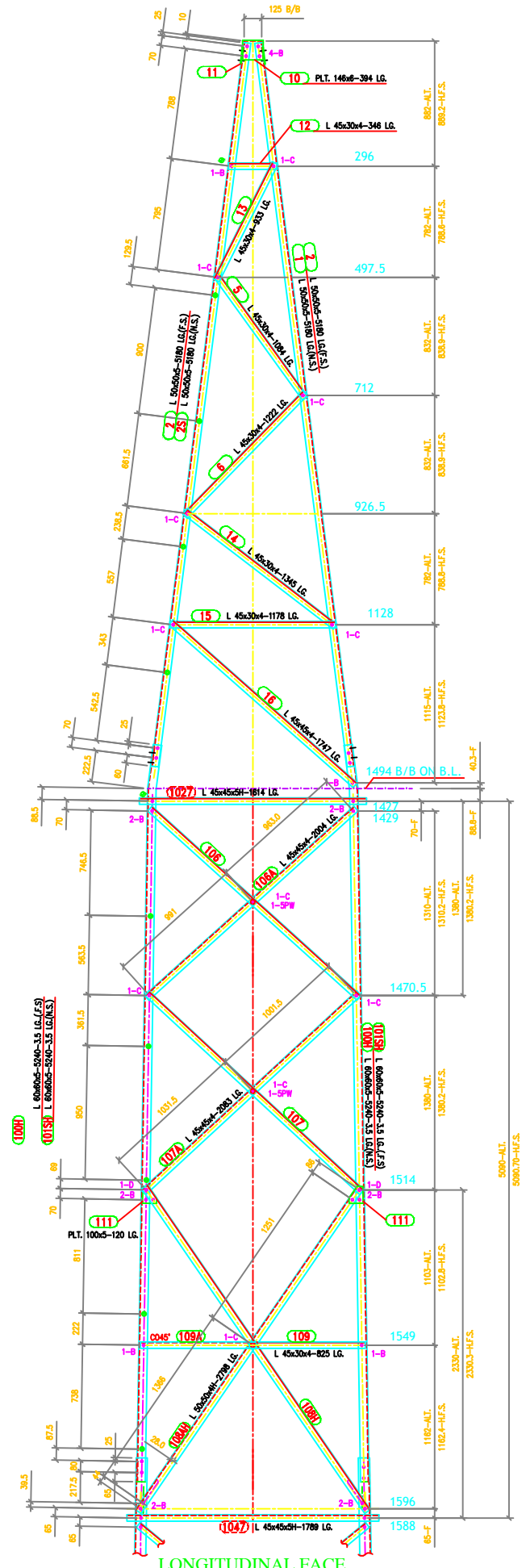


| TOWER SLOPE (FOR CAGE PART) |             |
|-----------------------------|-------------|
| Tan B                       | = 0.015867  |
| 2 Tan B                     | = 0.031734  |
| Face                        | = 1.000126  |
| Dev                         | = 1.000252  |
| In Face Slopes              |             |
| Tan B                       | = 0.015865  |
| Sec B                       | = 1.000126  |
| TOWER SLOPE (FOR PEAK)      |             |
| Tan B                       | = 0.1288699 |
| 2 Tan B                     | = 0.2577398 |
| Face                        | = 1.0082695 |
| Dev                         | = 1.0164718 |
| In Face Slopes              |             |
| Tan B                       | = 0.1278129 |
| Sec B                       | = 1.0081350 |



TRANSVERSE FACE



LONGITUDINAL FACE

