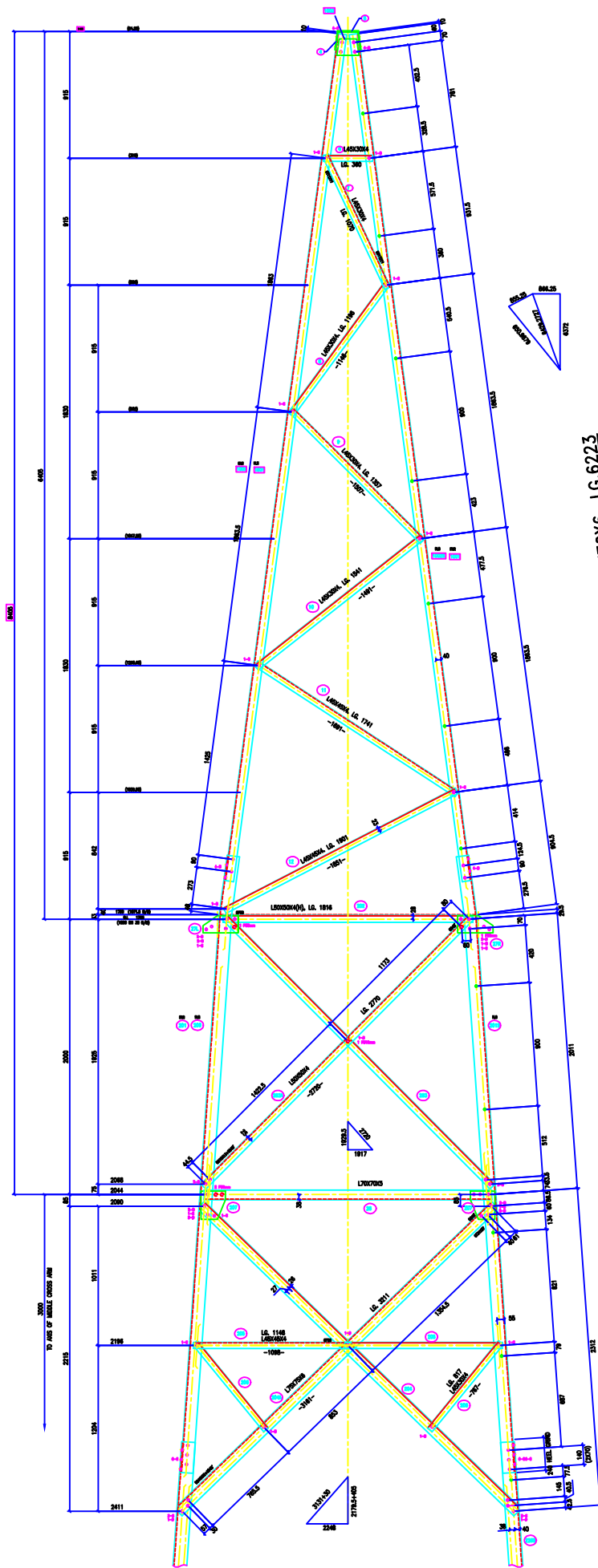
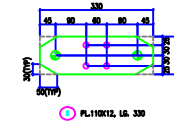
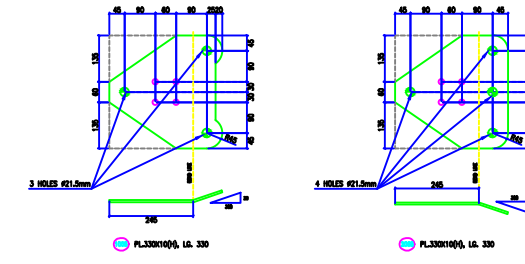
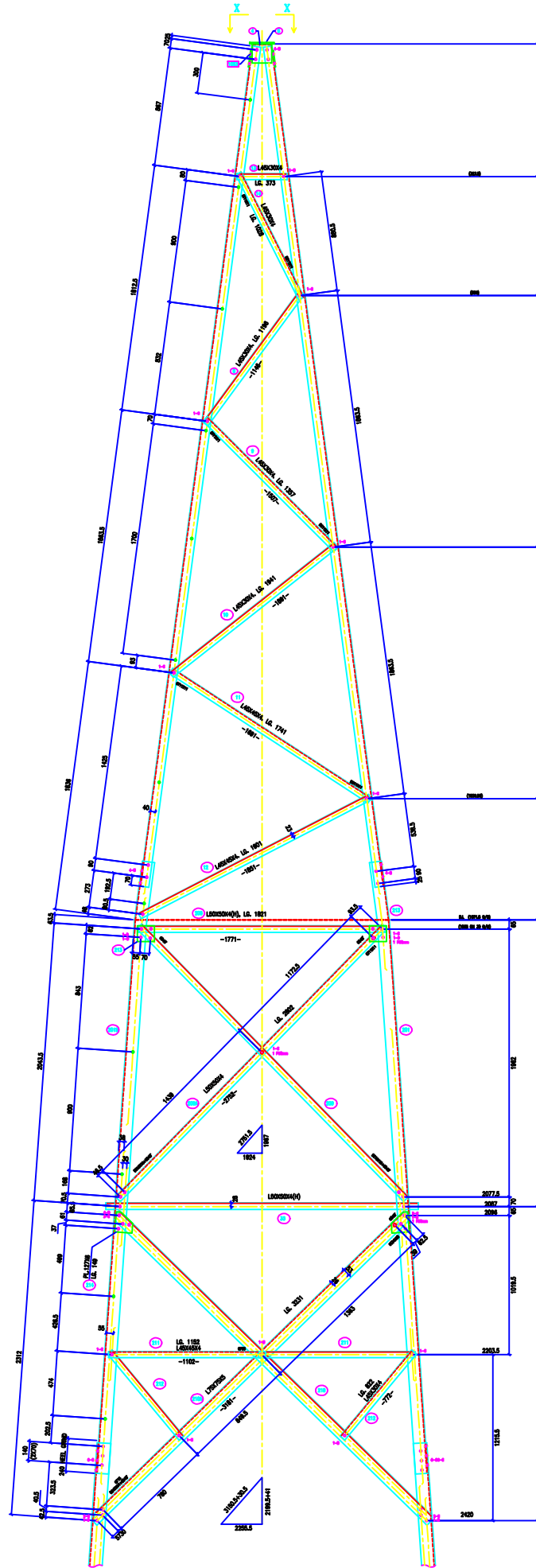
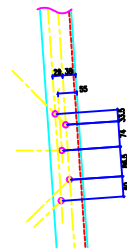


VERTICAL SCALE
 2500 = 0.00000
 2500 = 0.00000
 FACE = 0.00000
 DEVELOP = 0.00000
 H. FACE SCALE
 2500 = 0.00000
 2500 = 0.00000

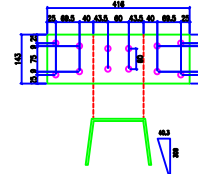


L70X70X6, LG.6223

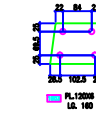
L90X90X6, LG.4508-3



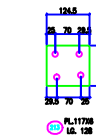
VIEW-X-X



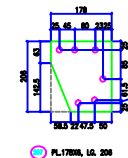
PL140X, LG.416



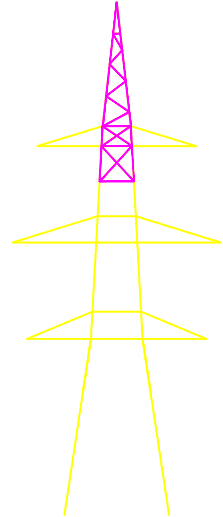
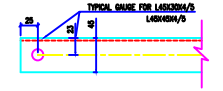
PL130X, LG.150



PL170X, LG.128



PL170X, LG.300



BOLTS AND NUTS STATEMENT		
TYPE	SIZE (IN MM)	QUANTITY
B	# 16X35	58
C	# 16X40	98
D	# 16X45	48
E	# 16X50	-
F	# 16X55	-
G	# 16X60	-
H	# 16X65	-
J	# 16X70	-
K	# 16X75	-
L	# 16X80	-
SPRING WASHERS		232
30 O.D PACKING WASHERS # 17.5 MM		
5 mm	6	
6 mm	12	
8 mm	2	
10 mm	2	
STEP BOLTS #16 mm X 175mm		22

GENERAL NOTES:
 1. ALL DIMENSIONS ARE IN MM UNLESS OTHERWISE SPECIFIED.
 2. HIGH STEEL BOLT AND NUTS TO IS808/IS427/IS 807
 3. ALL MILD STEEL BOLT AND NUTS ARE TO BE HOT DIP GALVANIZED AS PER ASTM A153
 4. ALL HIGH STEEL SECTIONS SHALL BE OF TESTED QUALITY CONFORMING TO IS 2002 STANDARD
 5. GALVANIZATION OF TOWER MEMBERS AND PLAT WASHERS AS PER IS 2002
 6. ALL HOLES # 12.5mm FOR #10mm BOLTS
 7. ALL HOLES # 17.5mm FOR #16mm BOLTS
 8. ALL HOLES # 21.5mm FOR #20mm BOLTS
 9. ALL HOLES # 17.5mm FOR #18mm STEP BOLTS
 10. STANDARD SPRING WASHERS ARE TO BE USED UNDER EACH NUT
 11. ALL FABRICATED MEMBERS SHALL HAVE PROTECTIVE PAINT
 12. CIRCULATED MEMBER BEING USED AS STEP BOLTS
 13. STEP BOLTS ARE TO BE PROVIDED ON TWO DIAGONALLY OPP. LEGS

MARK NO: 1 + 14 200 + 214 10011003 1005/210005

BIHAR STATE POWER TRANSMISSION COMPANY LTD

DRAWN BY		DESCRIPTION	220KV D/C TOWER TYPE "2DD" DETAIL OF PEAK & CAGE-I	SCALE	-
CHECKED BY		DRG NO	220KV-D/C-Struct-Peak-CageI-47	SHEET NO 1-1	REV. 0
APPROVED BY					