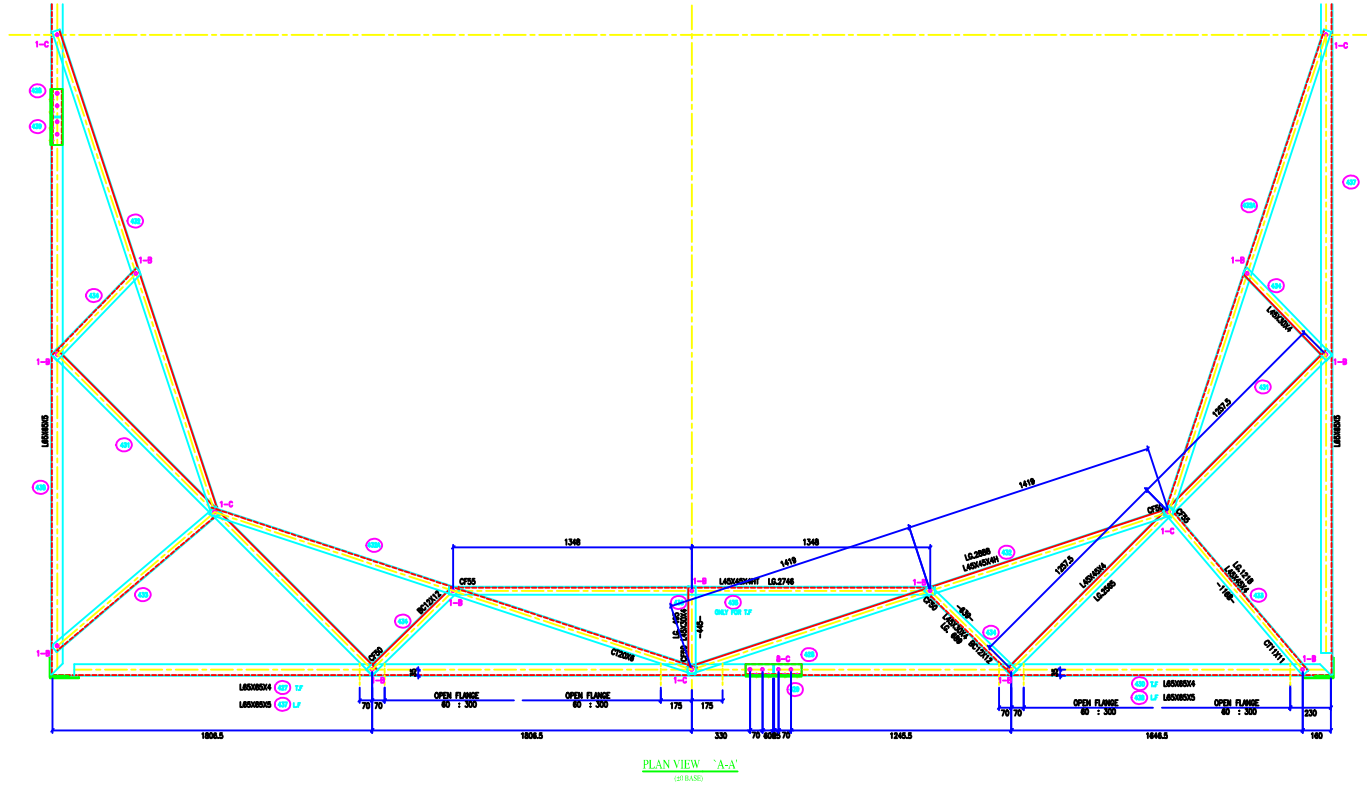
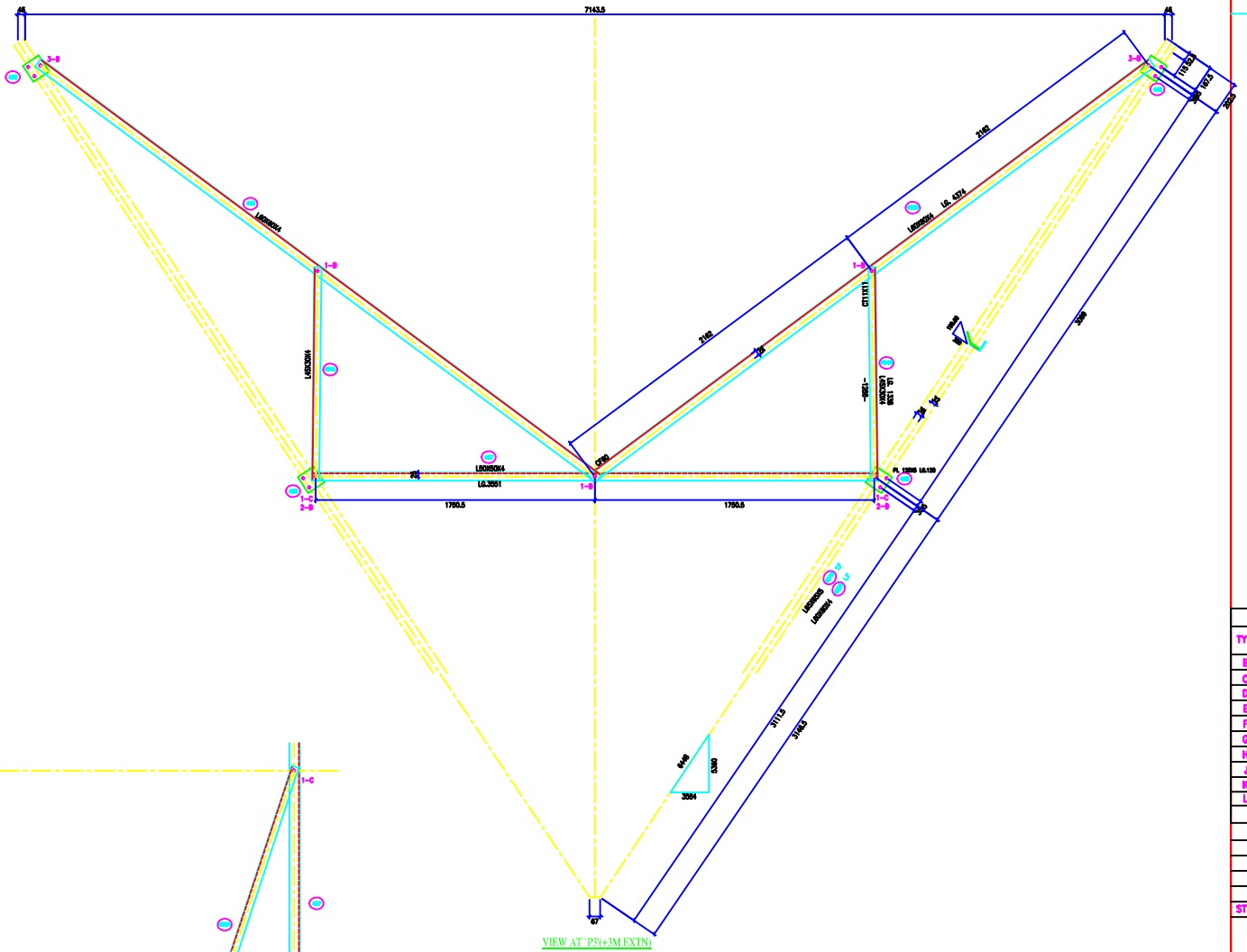
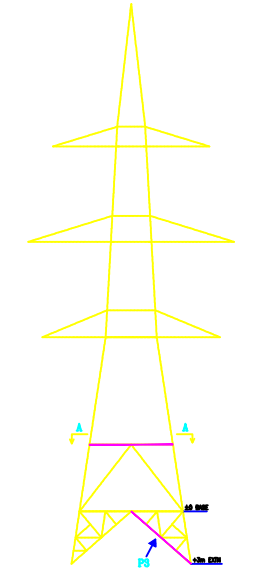
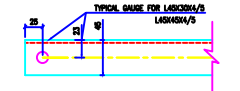


VERTICAL SCALE

1MM = 0.00001
 25MM = 0.00025
 FACE = 1.019848
 DEVELOP = 1.039408

HORIZONTAL SCALE

1MM = 0.198051
 25MM = 1.018133



BOLTS AND NUTS STATEMENT

TYPE	SIZE (H MM)	VIEW P3	QUANTITY VIEW A-A
B	# 16X35	S2	24
C	# 16X40	B	38
D	# 16X45	-	-
E	# 16X50	-	-
F	# 16X55	-	-
G	# 16X60	-	-
H	# 16X65	-	-
J	# 16X70	-	-
K	# 16X75	-	-
L	# 16X80	-	-
SPRING WASHERS		-	60
30 O.D PACKING WASHERS # 17.5 MM		-	62
5 mm		-	-
6 mm		-	-
8 mm		-	-
10 mm		-	-
STEP BOLTS #16 mm X 175mm		-	-

- GENERAL NOTES:**
- ALL DIMENSIONS ARE IN MM UNLESS OTHERWISE SPECIFIED.
 - MILD STEEL BOLT AND NUTS TO ENDS/13427/2.0 GUT.
 - ALL MILD STEEL BOLT AND NUTS ARE TO BE HOT DIP GALVANIZED AS PER ASTM A153.
 - ALL MILD STEEL SECTIONS SHALL BE OF TESTED QUALITY CONFORMING TO IS 2062 STANDARD.
 - GALVANIZATION OF TOWER MEMBERS AND FLAT WASHERS AS PER IS 2062.
 - ALL HOLES # 15.5mm FOR #16mm BOLTS.
 - ALL HOLES # 17.5mm FOR #16mm STEP BOLTS.
 - ALL HOLES # 21.5mm FOR #20mm BOLTS.
 - ALL HOLES # 17.5mm FOR #16mm STEP BOLTS.
 - STANDARD SPRING WASHERS ARE TO BE USED UNDER EACH NUT.
 - ALL FABRICATED MEMBERS SHALL HAVE P3ETS.
 - INDICATES MEMBERS BEING USED AS STEP BOLT.
 - STEP BOLTS ARE TO BE PROVIDED ON TWO DIAGONALLY OPP. LEGS.

MARK NO: 427 + 439, 463,464,467 & 468

BIHAR STATE POWER TRANSMISSION COMPANY LTD

DRAWN BY	DESCRIPTION	220KV D/C TOWER TYPE "2DB" PLAN VIEW A-A (±0 BASE)	SCALE
CHECKED BY	DRG NO	220KV-D/C-Struct-Plan-28	REV. 0
APPROVED BY	SHEET NO 1-1		