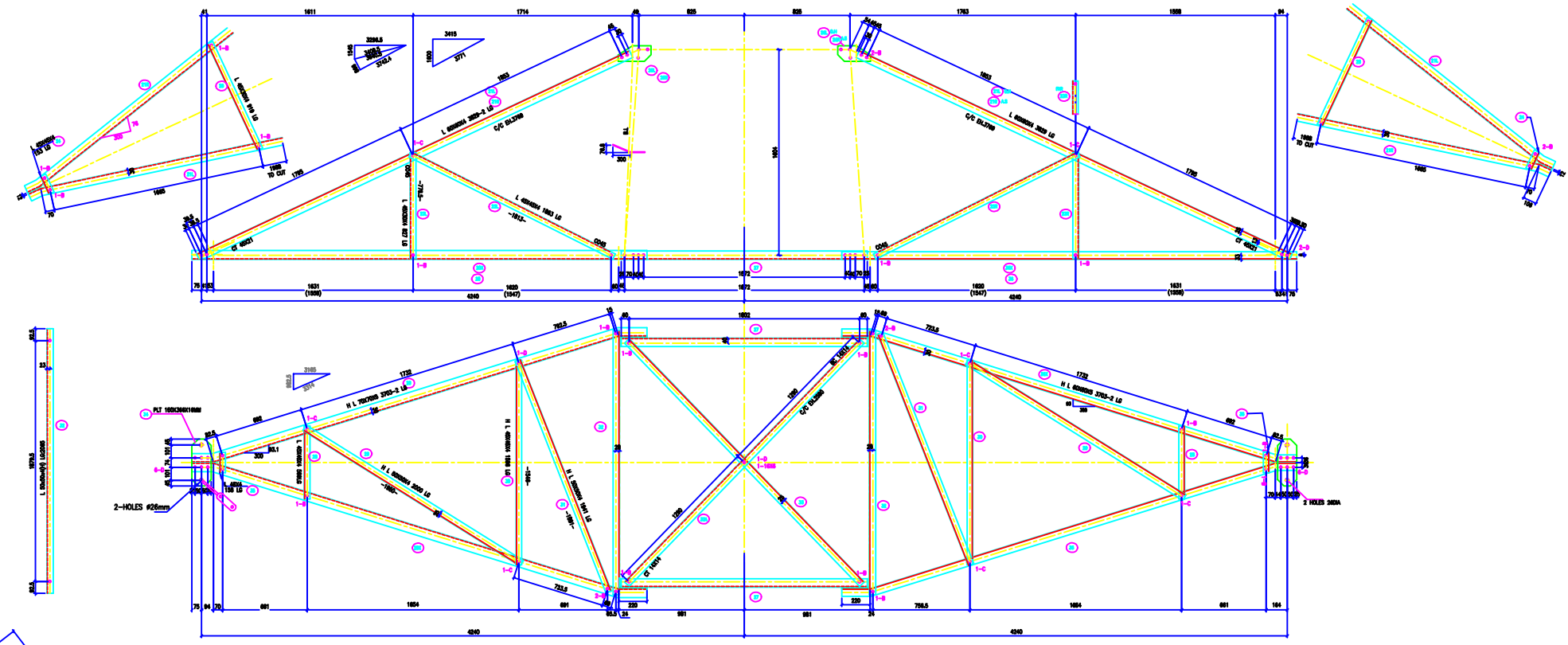
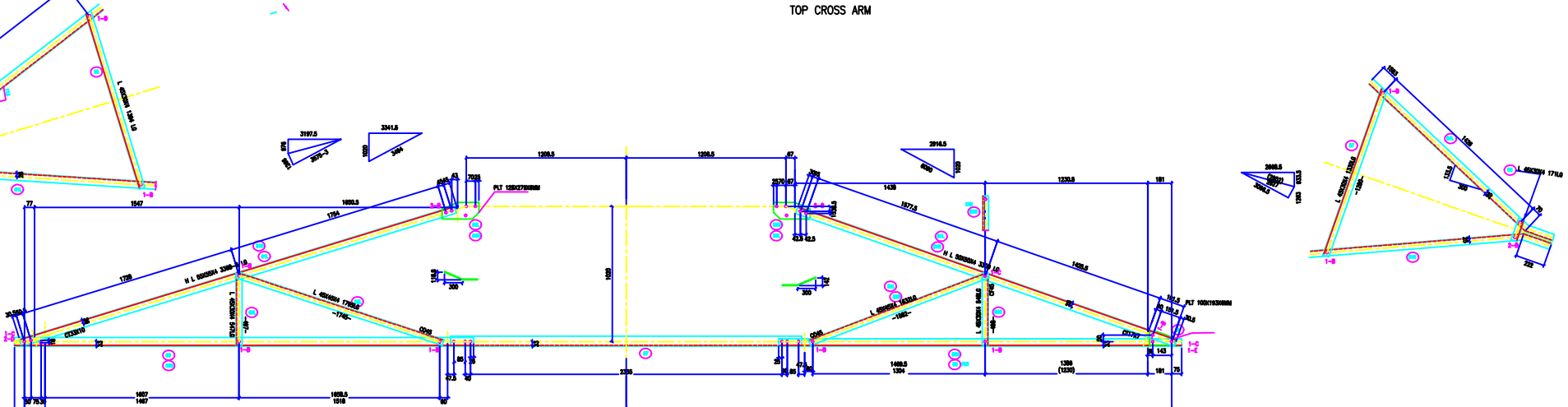


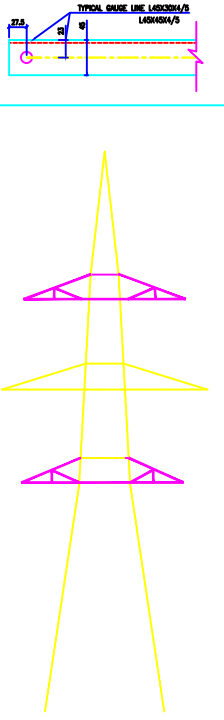
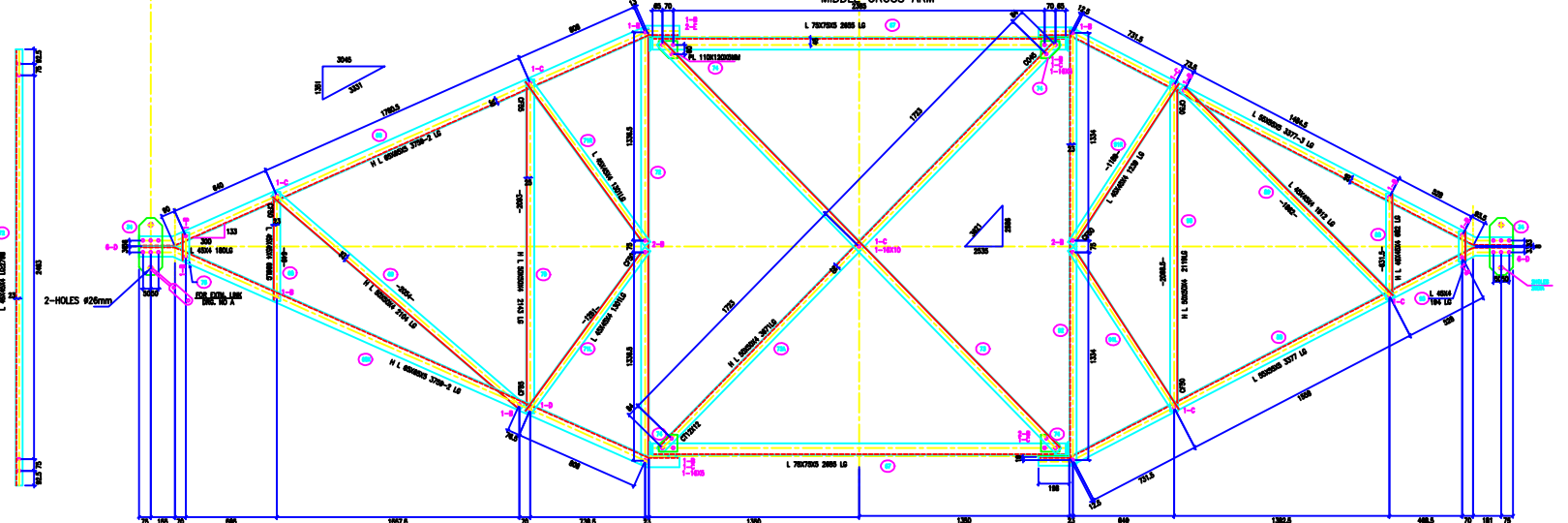
VERTICAL SLICE
 TAND -
 ZTAND -
 FACE -
 DEVELOP -
 BL FACE SLICE
 TAND -
 ZTAND -



TOP CROSS ARM



MIDDLE CROSS ARM



BOLTS AND NUTS STATEMENT

TYPE	SIZE (H MM)	QUANTITY
B	# 16X35	88
C	# 16X40	30
D	# 16X45	31
E	# 16X50	2
F	# 16X55	-
G	# 16X60	-
H	# 16X65	-
J	# 16X70	-
K	# 16X75	-
L	# 16X80	-
SPRING WASHERS		151
30 O.D PACKING WASHERS # 17.5 MM		
	5 mm	1
	6 mm	-
	8 mm	-
	10 mm	1
STEP BOLTS #16 mm X 175mm		-

- GENERAL NOTES:**
1. ALL DIMENSIONS ARE IN MM UNLESS OTHERWISE SPECIFIED.
 2. MILD STEEL BOLT AND NUTS TO IS 4068/15437/5.8 QTY
 3. ALL MILD STEEL BOLT AND NUTS ARE TO BE HOT DIP GALVANIZED AS PER IS 1327 PART-20
 4. ALL MILD STEEL SECTIONS SHALL BE OF TESTED QUALITY CONFORMING TO IS 808 STANDARD
 5. GALVANIZATION OF TOWER MEMBERS AND FLAT WASHERS AS PER IS 2629
 6. ALL HOLES # 18.5mm FOR #16mm BOLTS
 7. ALL HOLES # 17.5mm FOR #16mm STEP BOLTS
 8. ALL HOLES # 21.5mm FOR #20mm BOLTS
 9. ALL HOLES # 17.5mm FOR #16mm STEP BOLTS
 10. STANDARD SPRING WASHERS ARE TO BE USED UNDER EACH NUT
 11. ALL FABRICATED MEMBERS SHALL HAVE PROFS
 12. @ INDICATES MEMBERS BEING USED AS STEP BOLTS
 13. STEP BOLTS ARE TO BE PROVIDED ON TWO DIAGONALLY OPP. LEGS

MARK NO: 20 + 26, 60 + 75 80 + 93

BIHAR STATE POWER TRANSMISSION COMPANY LTD

DRAWN BY		DESCRIPTION	220KV D/C TOWER TYPE "2DB" DETAIL OF TOP & MIDDLE CROSS ARMS	SCALE	-
CHECKED BY					
APPROVED BY					
DRG NO	220KV-D/C-Struct-Top-Middle-X-26	SHEET NO 1-1	REV.	0	