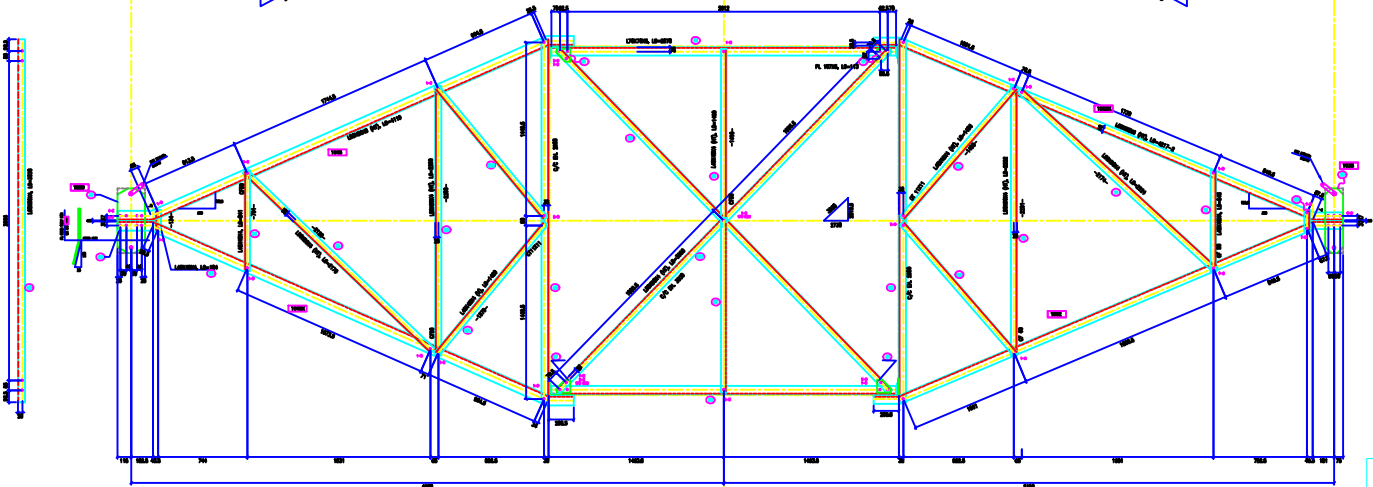
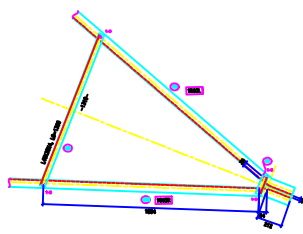
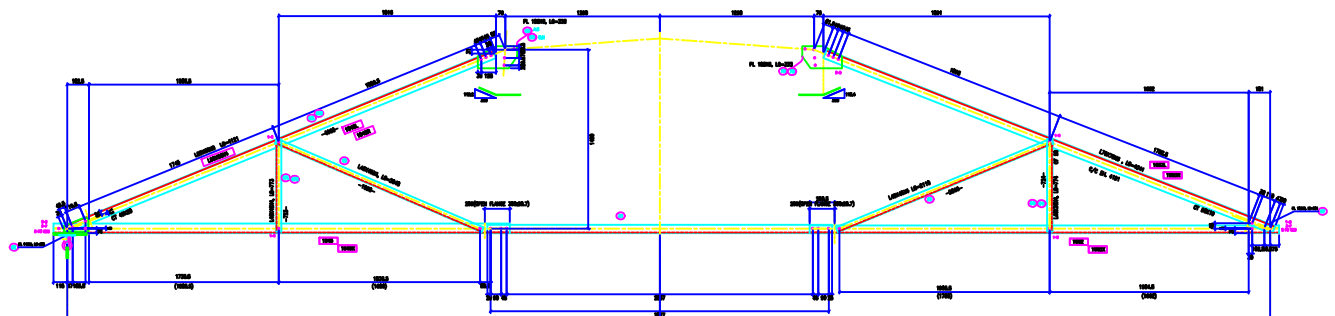
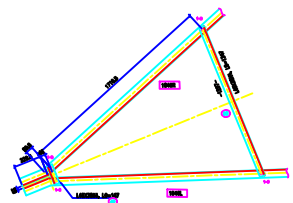
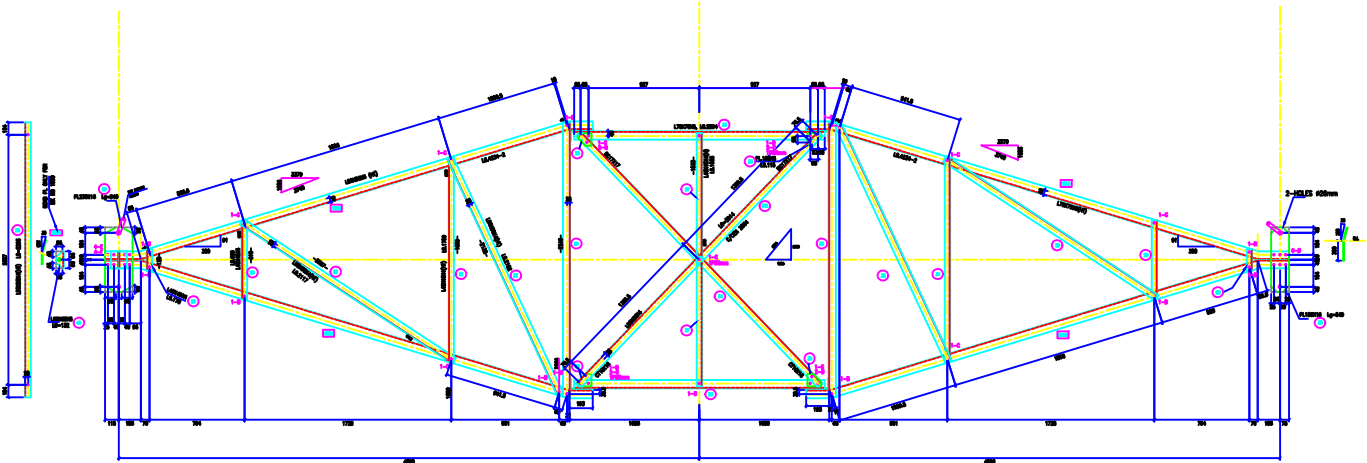
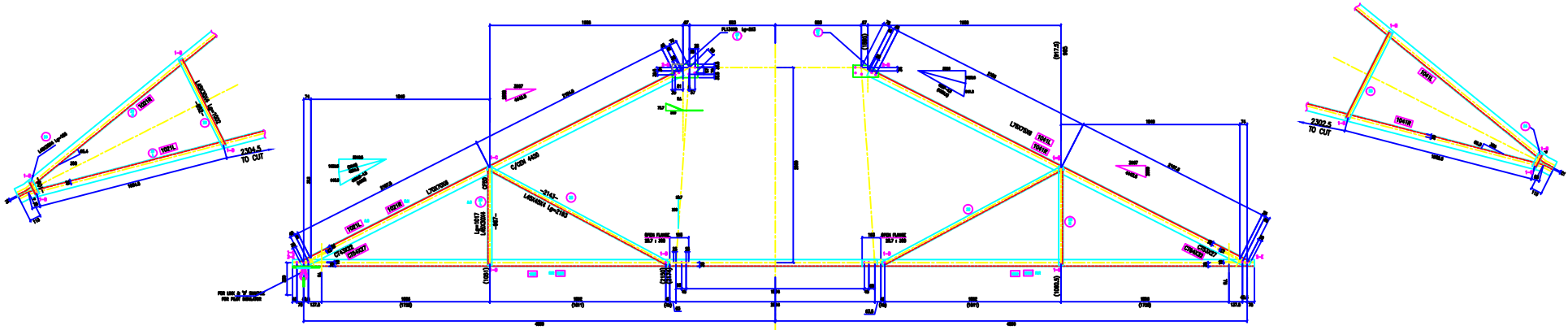
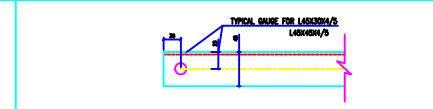


VERTICAL SCALE	
1:2000	----
1:4000	-----
HORIZONTAL SCALE	
1:2000	----
1:4000	-----



BOLTS AND NUTS STATEMENT

TYPE	SIZE (IN MM)	QUANTITY	
B	# 18X35	05	
C	# 18X40	28	
D	# 18X45	16	
E	# 18X50	12	
F	# 18X55	14	
G	# 18X60	--	
H	# 18X65	--	
J	# 18X70	--	
K	# 18X75	--	
L	# 18X80	--	
SPRING WASHERS # 17.5		156	
30 O.D. PACKING WASHERS # 17.5			
	5 mm	10	
	6 mm	3	
	8 mm	--	
	10 mm	--	
	12 mm	--	
STEP BOLTS #16 mm X 175mm		--	

GENERAL NOTES:

- ALL DIMENSIONS ARE IN mm UNLESS OTHERWISE SPECIFIED.
- MILD STEEL BOLT AND NUTS TO IS 1909/1947/1.8 SUT.
- ALL MILD STEEL BOLT AND NUTS ARE TO BE HOT DIP GALVANIZED AS PER IS 7665.
- ALL MILD STEEL SECTIONS SHALL BE OF TESTED QUALITY CONFORMING TO IS 2002 STANDARD.
- MANUFACTURE OF TOWER MEMBERS AND FLAT WASHERS AS PER IS 2002.
- ALL HOLES # 13.5mm FOR #16mm BOLTS.
- ALL HOLES # 17.5mm FOR #20mm BOLTS.
- ALL HOLES # 21.5mm FOR #25mm BOLTS.
- ALL HOLES # 25.5mm FOR #30mm STEP BOLTS.
- STANDARD SPRING WASHERS ARE TO BE USED UNDER EACH NUT.
- ALL FABRICATED MEMBERS SHALL HAVE PREP'D.
- SPRING WASHERS SHALL BE USED AS STOP BOLTS.
- STOP BOLTS ARE TO BE PROVIDED ON TWO DIAGONALLY OPP. LESS.

MARK NO: 20+41, 45+73, [1020/X] [1021/L/R] [1036/X] [1038] [1039] [1041/L/R] [1045/X] [1041/L/R] [1062/X] [1063/X]

DRAWN BY	
CHECKED BY	
APPROVED BY	

BIHAR STATE POWER TRANSMISSION COMPANY LTD		
DESCRIPTION	220KV D/C TOWER TYPE "2DD" DETAIL OF MIDDLE & TOP CROSS ARM	SCALE -
DRG NO	220KV-D/C-Struct-Top-Middle-X-46 SHEET NO 1-1	REV. 0