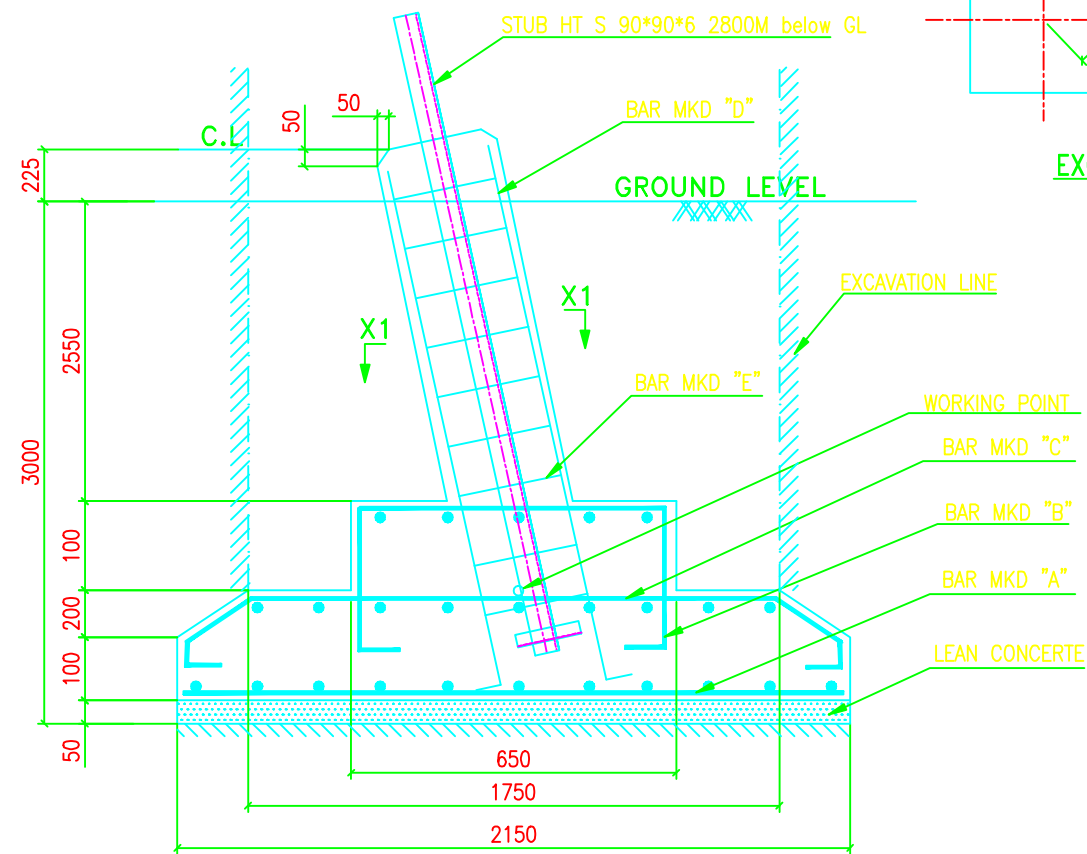


BAR BENDING SCHEDULE FOR FOUNDATION							
MARK No.	SHAPE OF THE BAR	DIA (mm)	LENGHT (mm)	Nos. Leg	Unit Wt. (Kg/m)	Wt./Leg. (Kg)	Wt./Tower (Kg)
A		10	2050	20	0.617	25.297	101.186
B		10	1290	6	0.617	4.775	19.100
C		10	2274	12	0.617	16.836	67.344
D		20	3350	8	2.466	66.088	264.352
E		8	1550	13	0.390	7.86	31.434
F		8	1166	13	0.390	5.912	23.646
TOTAL REINFORCEMENT							507.064



QUANTITIES/TOWER	
EXCAVATION VOLUME	= 38.289 Cu.M
CONCRETE (1:1.5:3)	= 7.318 Cu.M
CONCRETE (1:3:6)	= 0.925 Cu.M
REINFORCEMENT	= 507.064 Kgs.

TYPE OF TOWER : DA+0

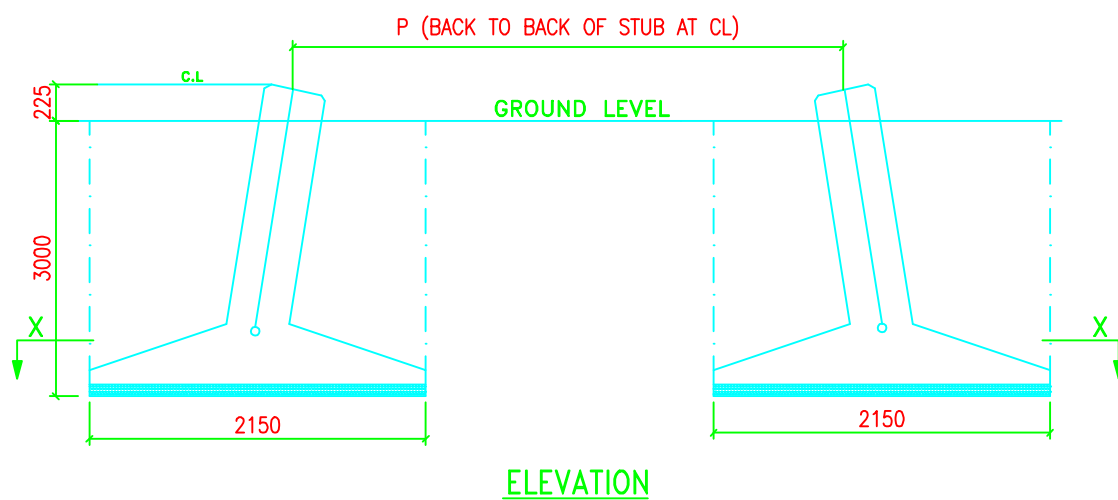
TOWER SLOPE TAN ALPHA = 0.09760541						
LEVEL	STUB	CG OF STUB	P	M	N	CLEAT DETAILS
+0M	HT 90*90*6	24.2	4548	5041	7129	MS 80*80*6 NO. OF PAIRS 2 3 BOLTS/PAIR

NOTES:-

- DRAWING NOT TO SCALE.
- ALL DIMENSIONS ARE IN MM UNLESS OTHERWISE STATED.
- REINFORCED BAR USED Fe 415 CONFORMING TO IS 1786-1985
- MIX PROPERTIES CONFORMING TO IS 456-2000
- CONCRETE MIX USED GRADE M-20 (NOMINAL MIX 1:1.5:3)
LEAN CONCRETE MIX USED GRADE M-10 (NOMINAL MIX 1:3:6)
- WHENEVER NECESSARY TO CLEAR STUB AND CLEAT STIRRUPS AND BARS ARE TO BE ADJUSTED AT SITE.
- CLEAR COVER TO THE MAIN REINFORCEMENT BARS SHALL BE 50MM UNLESS OTHERWISE SPECIFIED.
- FOR CLEAT AND STUB TEMPLATE DETAILS PLEASE REFER RESPECTIVE STUB DRG.

THE FOUNDATION HAS BEEN DESIGNED FOR THE FOLLOWING PARAMETERS:

TYPE OF SOIL : WFR
 UNIT WEIGHT : 1440/940 Kg/Cu.M
 BEARING CAPACITY : 62500 Kg/Sq.M
 ANGLE OF REPOSE : 20/10 Degrees
 WATER TABLE : 1.5M TO 3.0M BELOW G.L



BIHAR STATE POWER TRANSMISSION COMPANY LTD

DRAWN BY	DESCRIPTION	132KV D/C "DA+0" TOWER FOUNDATION DRAWING OF TYPE - WFR	SCALE
CHECKED BY	DRG NO	132KV-D/C-0-Fdn-WFR-17	-
APPROVED BY		SHEET NO 1-1	REV. 0