

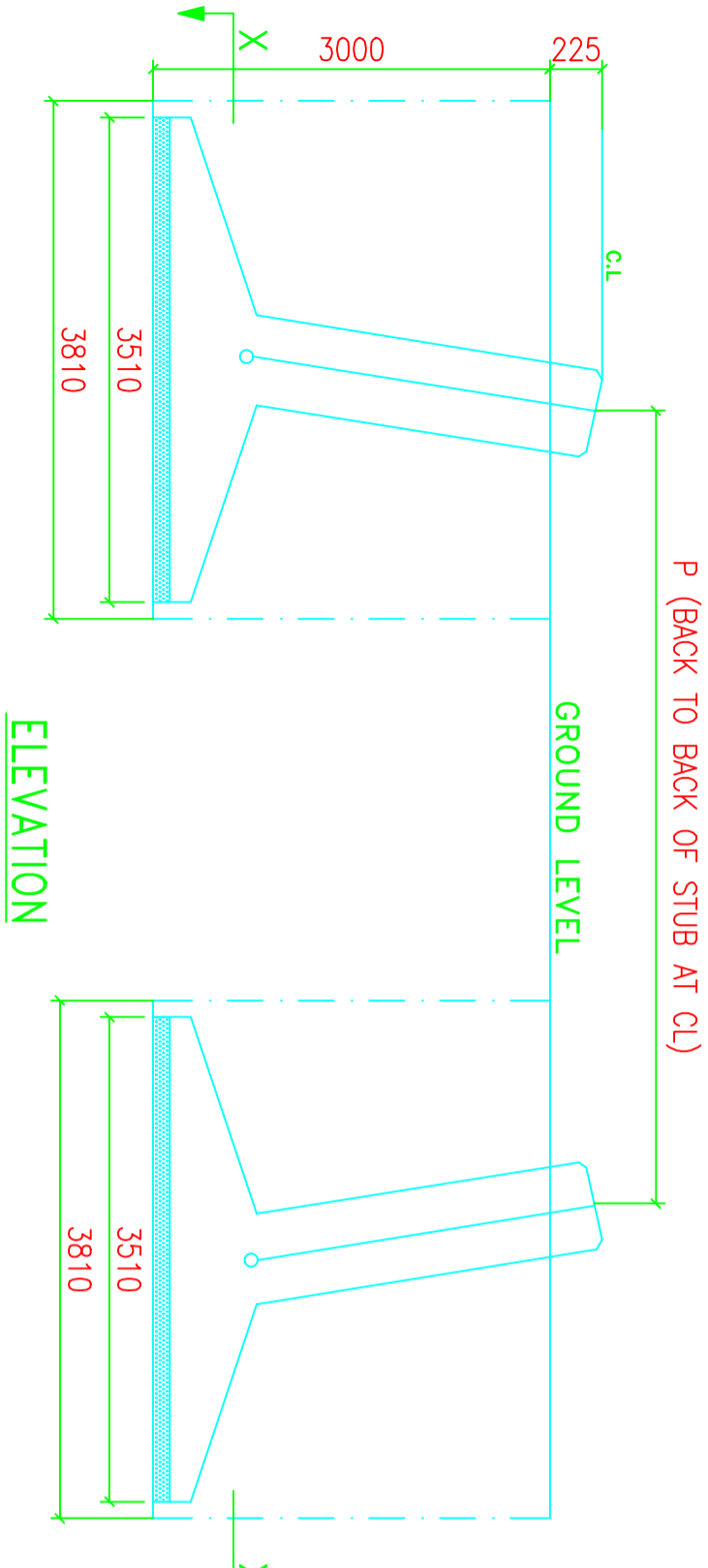
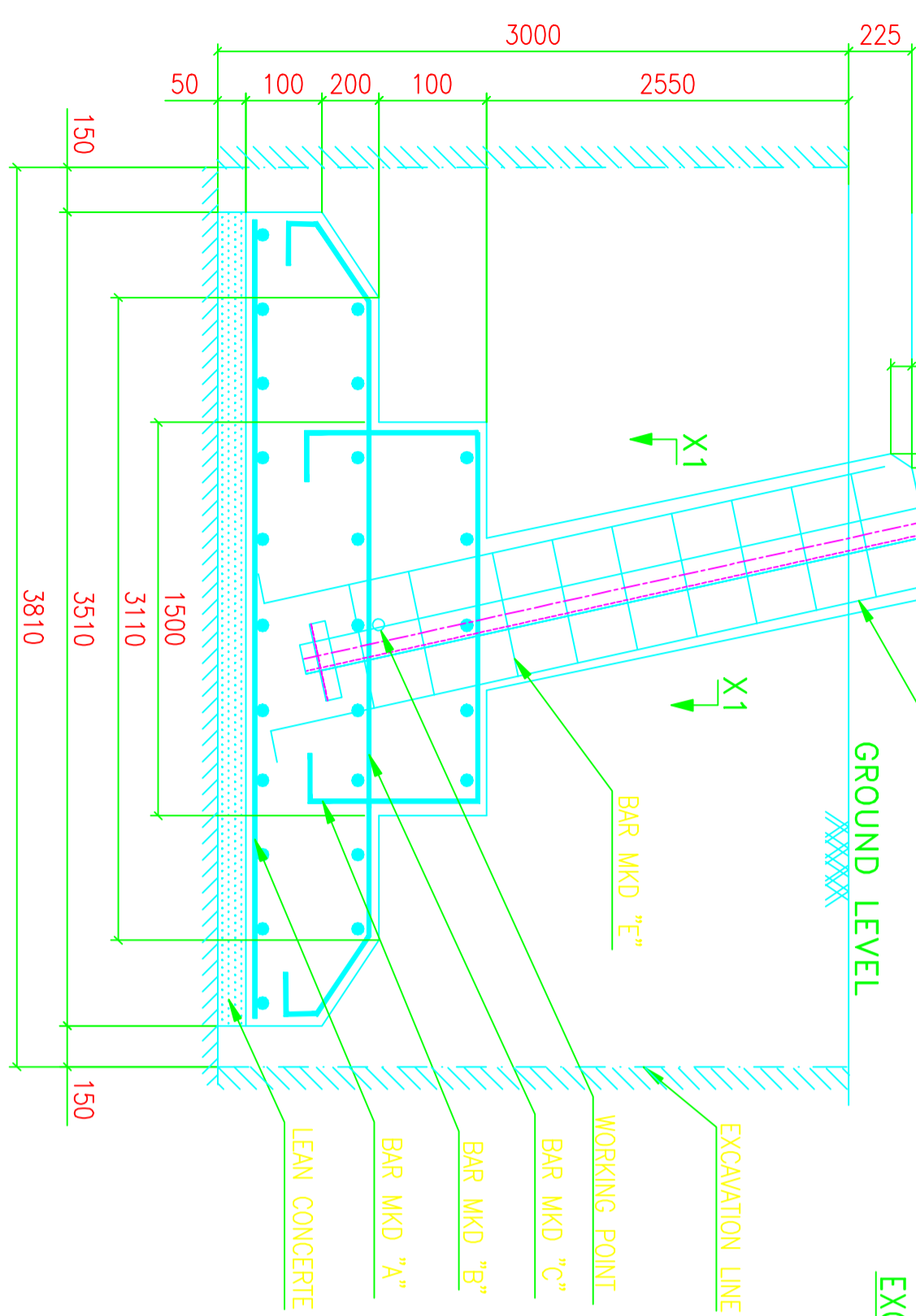
BAR BENDING SCHEDULE FOR FOUNDATION						
MARK No.	SHAPE OF THE BAR	DIA (mm)	LENGHT (mm)	Nos. Leg	Unit Wt. (kg/m)	Wt./Leg. (kg)
A	3410	10	3410	72	0.617	151.485
B	1400	10	2140	20	0.617	26.407
C	3010	10	3634	26	0.617	58.296
D	3350	25	3350	8	3.854	103.287
E	1590	8	1590	13	0.390	8.061
F	1198	8	1198	13	0.390	6.074
TOTAL REINFORCEMENT						24.215

TYPE OF TOWER : DC+0

TOWER SLOPE TAN ALPHA = 0.152107

LEVEL	STUB	CG OF STUB	P	M	N	CLEAT DETAILS
+0M	HT110*110*10	30.9	6613	7333	10370	MS 90*90*6 NO. OF PAIRS 2 4 BOLTS/PAIR

QUANTITIES/TOWER	
EXCAVATION VOLUME	= 174.193 Cu.M
CONCRETE (1:1.5:3)	= 16.952 Cu.M
CONCRETE (1:3:6)	= 2.464 Cu.M
REINFORCEMENT	= 1414.445 Kgs.



- NOTES:-**
- DRAWING NOT TO SCALE.
 - ALL DIMENSIONS ARE IN MM UNLESS OTHERWISE STATED.
 - REINFORCED BAR USED Fe 415 CONFORMING TO IS 1786-1985
 - MIX PROPERTIES CONFORMING TO IS 456-2000
 - CONCRETE MIX USED GRADE M-20 (NOMINAL MIX 1:1.5:3)
 - LEAN CONCRETE MIX USED GRADE M-10 (NOMINAL MIX 1:3:6)
 - WHENEVER NECESSARY TO CLEAR STUB AND CLEAT STIRRUPS AND BARS ARE TO BE ADJUSTED AT SITE.
 - CLEAR COVER TO THE MAIN REINFORCEMENT BARS SHALL BE 50MM UNLESS OTHERWISE SPECIFIED.
 - FOR CLEAT AND STUB TEMPLATE DETAILS PLEASE REFER RESPECTIVE STUB DRG.

THE FOUNDATION HAS BEEN DESIGNED FOR THE FOLLOWING PARAMETERS:

TYPE OF SOIL : PS
 UNIT WEIGHT : 1440/940 Kg/Cu.M
 BEARING CAPACITY : 13675 Kg/Sq.M
 ANGLE OF REPOSE : 30/15 Degrees
 WATER TABLE : 0.75M TO 1.5M BELOW G.L

BIHAR STATE POWER TRANSMISSION COMPANY LTD

132KV D/C "DC+0" TOWER

FOUNDATION DRAWING OF TYPE - PS

DESCRIPTION	DRG NO	SCALE
DRAWN BY		
CHECKED BY		
APPROVED BY		
	132KV-D/C-0-Fdn-PS-33	SHEET NO 1-1
		REV. 0