

BAR BENDING SCHEDULE FOR FOUNDATION						
MARK No.	SHAPE OF THE BAR	DIA (mm)	LENGHT (mm)	Nos. Leg	Unit Wt. (kg/m)	Wt./Leg. (kg)
A	4380	12	4380	62	0.888	241.145
B	1430 382 100	12	2094	16	0.888	34.014
C	3980 2/2 100	12	4604	40	0.888	63.534
D	3000 350	20	3350	16	2.466	132.178
E	350 55	28	3350	4	4.834	64.775
F	350 130	8	1550	13	0.390	7.86
G	350 130	8	1138	13	0.390	5.77
TOTAL REINFORCEMENT					0.390	11.25
TOTAL REINFORCEMENT					0.390	45.02

TYPE OF TOWER : DD+3/6/9

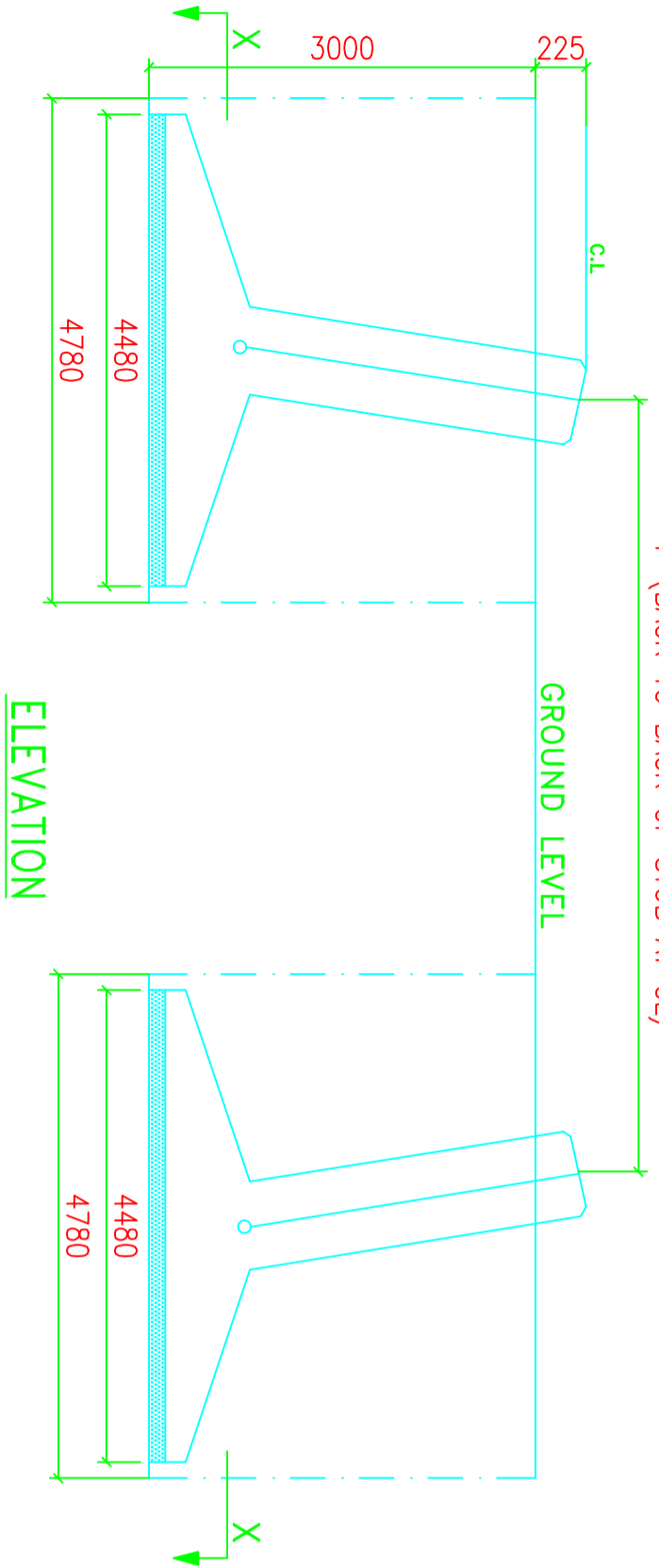
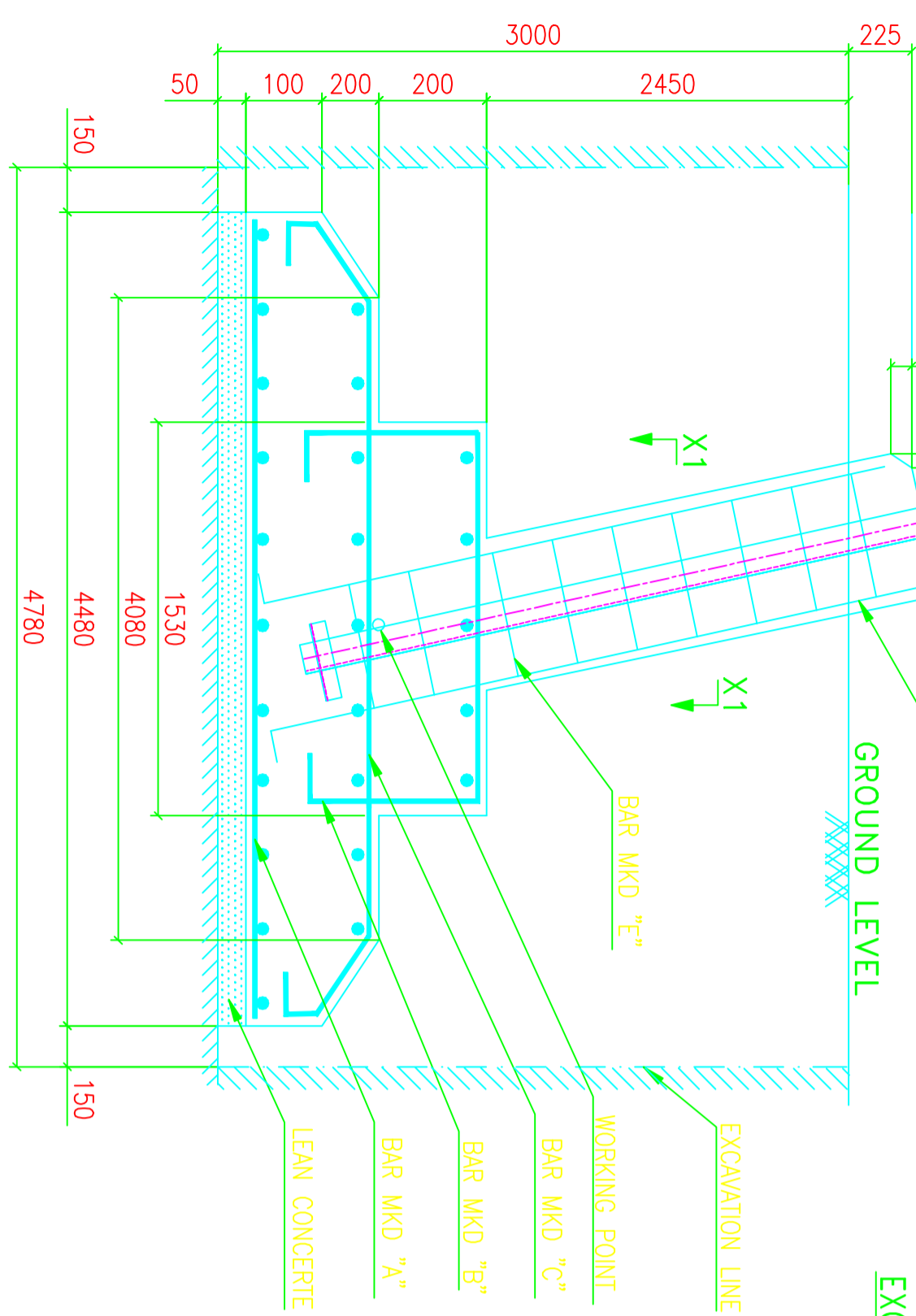
TOWER SLOPE TAN ALPHA = 0.18403

LEVEL	STUB	CG OF STUB	P	M	N	CLEAT DETAILS
+3M	HT130*130*10	35.9	9917	10089	14268	MS 90*90*6 NO.OF PAIRS 3 OUTER-290MM INNER-210MM 4 BOLTS/PAIR
+3M	HT130*130*10	35.9	10281	11193	15829	
+3M	HT130*130*10	35.9	11386	12297	17391	

QUANTITIES/TOWER	
EXCAVATION VOLUME	= 274.18 Cu.M
CONCRETE ( 1:1.5:3)	= 26.73 Cu.M
CONCRETE ( 1:3:6)	= 4.01 Cu.M
REINFORCEMENT	= 2642.14 Kgs.

THE FOUNDATION HAS BEEN DESIGNED FOR THE FOLLOWING PARAMETERS:  
 TYPE OF SOIL : FS  
 UNIT WEIGHT : 1440/940 Kg/Cu.M  
 BEARING CAPACITY : 13675 Kg/Sq.M  
 ANGLE OF REPOSE : 30/15 Degrees  
 WATER TABLE : 0M TO 0.75M BELOW G.L

- NOTES:-**
- DRAWING NOT TO SCALE.
  - ALL DIMENSIONS ARE IN MM UNLESS OTHERWISE STATED.
  - REINFORCED BAR USED Fe 415 CONFORMING TO IS 1786-1985
  - MIX PROPERTIES CONFORMING TO IS 456-2000
  - CONCRETE MIX USED GRADE M-20 (NOMINAL MIX 1:1.5:3)
  - LEAN CONCRETE MIX USED GRADE M-10 (NOMINAL MIX 1:3:6)
  - WHENEVER NECESSARY TO CLEAR STUB AND CLEAT STIRRUPS AND BARS ARE TO BE ADJUSTED AT SITE.
  - CLEAR COVER TO THE MAIN REINFORCEMENT BARS SHALL BE 50MM UNLESS OTHERWISE SPECIFIED.
  - FOR CLEAT AND STUB TEMPLATE DETAILS PLEASE REFER RESPECTIVE STUB DRG.



BIHAR STATE POWER TRANSMISSION COMPANY LTD

132KV D/C "DD+3/6/9" TOWER  
 FOUNDATION DRAWING OF TYPE - FS

DESCRIPTION	DRG NO	SCALE
132KV-D/C-+3/6/9-Fdn-FS-44 <td>132KV-D/C-+3/6/9-Fdn-FS-44 <td>-</td> </td>	132KV-D/C-+3/6/9-Fdn-FS-44 <td>-</td>	-

DRAWN BY	CHECKED BY	APPROVED BY

SHEET NO	REV.
1-1	0